



SUPER SPECIALITY CENTRE

SPINE & NEURO REHABILITATION & EARLY INTERVENTION CENTRE

Thanal

Kanjirappally
www.thanal.org.in



**ASER
FOUNDATION**

daya
Charitable Trust

A Brief History Of Thanal

Since 2008, Daya Rehabilitation Trust Vadakara has been operating as THANAL, authorised by the Indian Trust Act, and has made significant progress in its philanthropic activities. THANAL is the founding of a group of people who share a sense of patronage and brotherhood, offering their support to the most vulnerable in society. The name 'THANAL' gave rise to its philanthropic aspirations as a reassurance and social security upholding the rights and dignity of society's most underrepresented population. The humanitarian movements in all senses have received the goodwill and generous help of well-wishers from the local community. Thanal have been actively involved in humanitarian work in 15 states in India, focusing on Rehabilitation. THANAL's main tenet is to operate in fields where most social actors are missing, providing aid or leading initiatives for the most marginalised and at-risk groups. It has been operating for 14 years with the mission of aiding the most vulnerable people while pledging to have a significant impact on as many lives as possible. THANAL's only time-hallowed asset is valuable advice, suggestions and consideration.

THANAL warmly recognizes the helpful hands of all benign selves, whose exalted associations, together with benevolent contributions, have greatly aided the altruistic movement. Thanal's contributions put social benefits truly at your fingertips!

Vision

Bringing people together, giving them the solutions they need to recapture ownership of their own liberation from past economic and social repression, advance equity, and secure strong futures. (via education, proper health, and rights-based mechanisms).

Mission

A transformative community based psycho-socio-vocational rehabilitation approach that helps communities to become self-sufficient and engage in sustainable development and commerce.



Thanal

Kanjirappally

Thanal, headquartered in Vadakara, is an holistic organization committed to providing impactful interventions and commendable services for rehabilitating individuals facing physical and mental challenges, especially those from financially disadvantaged backgrounds in the districts of **IDUKKI, PATHANAMTHITTA, and KOTTAYAM.**

The Thanal Kanjirappally has launched its operations, focusing on extending support to these communities. The construction of a **40,000 sq. ft.** building, spread across five floors and comprising seven sections catering to various sectors, is progressing rapidly.

ONGOING PROJECTS



PARAPLEGIA
CENTRE



EARLY
INTERVENTION
CENTRE



SPECIAL
SCHOOL



VOCATIONAL
TRAINING CENTRE



DIALYSIS
CENTRE



PAIN AND PALLIATIVE
CARE UNIT



EMPATHY
CLINIC



PRICELESS
PHARMACY

UPCOMING PROJECTS



DESTITUTE
HOME



BUILDING FUTURES
CHILD CARE CENTER



CENTRE FOR SPINE & NEURO REHABILITATION

PARAPLEGIA CENTRE

A stage-of-the-art physiotherapy and neuro-rehabilitation Centre that aims to bring back to life those whose body is partially or completely paralyzed due to stroke or accident and whose life is confined within a room.

Neurorehabilitation centres aims to reduce disability and preserve function in people affected by a neurological condition, such as stroke, traumatic head or spinal injury or brain tumour. A community-based rehabilitation has been designed to assist people in returning to their regular lives by providing them designed to assist people in returning to their regular lives by providing them with emotional, financial and vocational help and guidance.





THANAL centres have advanced facilities like Hand Robotics Unit, Operation Theatre Complex, Trauma ICU, Hydrotherapy Unit, Virtual Reality Unit, Balance Assessment and Training Unit, Gait Training Lab, Gymnasium for Disabled, In-house Sensory Park, In-house Turf for Sports Injury Rehabilitation, well equipped Therapy Units, Disabled-Friendly Infrastructure and Ergonomics. Among the disabilities we address spinal cord injuries, head trauma, stroke and other adult neurological disorders. The mission upheld by THANAL Spine & Neuro Rehabilitation Centres is to further the liberation of people with disabilities.



SOLUTIONS FOR

- ▶ Stroke
- ▶ Spinal cord injury
- ▶ Musculoskeletal injury
- ▶ Sports injury
- ▶ Inflammatory disorders

EARLY INTERVENTION CENTRE

The Centre provides early detection of physical and mental disabilities in children and provides comprehensive and scientific treatment, care and support to make differently abled children self-sufficient.

Our superspeciality earliest intervention centres use cutting-edge technology, with foetal anatomy examinations during normal prenatal scans to detect serious anomalies in both low-risk and high-risk pregnancies. Now we are the first service provider of its sort in India. Next-generation sequencing (NGS) technology is used for genetic condition testing and diagnosis, assisting in the identification of rare genetic abnormalities.



Why Early Intervention Centre ?

- ▶ Increase in Survival of High Risk Babies
- ▶ Critical Developmental Period
- ▶ Remarkable Brain Development
- ▶ Personality Formation



SERVICES

- ▶ **DOCTOR CONSULTATION**
- ▶ **NEONATOLOGIST**
- ▶ **GENETIC COUNSELLING**
- ▶ **PHYSIATRIST**
- ▶ **PEDODONTIST**
Pediatric Dentist
- ▶ **DEVELOPMENTAL SCREENING**
Early identification of developmental delays
- ▶ **CHILD PSYCHOLOGY**
Psychological support for children
- ▶ **BEHAVIOUR MODIFICATION**
Strategies for behavioral improvement
- ▶ **PHYSIOTHERAPY**
Physical therapy for children
- ▶ **OCCUPATIONAL THERAPY**
Enhancing daily life skills
- ▶ **SPEECH THERAPY**
Improving communication skills
- ▶ **AUDIOLOGICAL EVALUATIONS**
Hearing assessment
- ▶ **SPECIAL EDUCATION**
Tailored educational support
- ▶ **ADL TRAINING**
Activities of Daily Living
- ▶ **PARENTAL COUNSELLING**
Support for families
- ▶ **SENSORY INTEGRATION THERAPY**
Enhancing sensory processing
- ▶ **AQUATIC THERAPY**
Therapeutic swimming
- ▶ **GROUP THERAPY**
Social Interaction skills
- ▶ **MUSIC THERAPY**
Creative therapeutic approaches



SPECIAL SCHOOL

Individuals with special needs are often subject to lower expectations in the eyes of the general public. Nonetheless, it is imperative that families place a high value on the education of children with disabilities. The establishment of special schools that concentrate on the comprehensive socio-psychological development of these individuals is crucial to fostering greater acceptance within the family. Furthermore, it is essential that all children with disabilities have access to education, with appropriate educational settings determined through assessment by a team consisting of a physician, psychologist, and special educator. In order to eliminate social stigmas and biases associated with these children, we have initiated the “Buddies Meet” program to integrate special pupils into mainstream society.



VOCATIONAL TRAINING CENTRE

A training centre that prepares differently-abled adults to become self-sufficient by providing them with practical training to find various career fields according to their aptitude and ability.

Vocational rehabilitation for destitute has been developed to assist physically abled persons in our destitute homes in finding some sort of economic activity that may also lead to their financial independence and economic security. The employment stipulations rely on the applicant's abilities, preferences and talents as well as the market's existing opportunities. The active economic engagement of the destitute is thus promised by this placement cell. Our vocational rehab team provides training and assistance for the registration of a product or service, as well as its branding and marketing.



DIALYSIS CENTRE

Kidney disease is a serious public health issue that is on the rise globally. To address the inequity in access to hemodialysis for the socio-economic vulnerable populations, we offer community-based hemodialysis units in rural areas, which are unique in that they approach individuals in the lower rungs of society with the purpose of promoting dignity and autonomy.

This unit functions to support access to hemodialysis closer to their own community in urban and semi urban regions for whom inadequate housing and/or utilities are barriers to hemodialysis. A personalised, patient-centered strategy that prioritizes patient choices, aids in overcoming socio-economic obstacles, and promotes more equal access to our best-practice services.



PAIN & PALLIATIVE CARE UNIT

A palliative care system that operates every day of the week, including Home Care, Nursing Care, OP & IP

Our palliative care facilities work to enhance the quality of life for patients and families living with life-threatening disease by offering pain and symptom relief, spiritual and psychological support from diagnosis to end-of-life and bereavement. Our centres include the bedridden, HIV positive individuals, disabled and other critically ill individuals.



EMPATHY CLINIC

A psychiatry clinic that operates every day, providing expert treatment to people with mental challenges.

The Target is to identify and support people experiencing psychiatric distress in rural communities belonging to the most vulnerable socio-economic groups. Our services cater for adults as well as children and adolescents and provide 24-hour service in rural, urban, and semi-urban areas. The centre provides continuous, tailored community-based mental health care and support, including emergency services.



PRICELESS PHARMACY

Thanal Pharmacy is a retail pharmacy chain that offers high-quality medications at reasonable prices. Thanal Pharmacy stores opened their doors in 2021. Prize Health is our associated pharmaceutical manufacturing company, supplying medicines at the most affordable cost. We support those who are economically disadvantaged by offering medications at affordable prices while maintaining the highest standards of quality.



DESTITUTE HOME

Destitute homes run by Thanal offer comprehensive rehabilitation services to the poor, homeless and destitute in India. In addition to providing shelter, the homes also offer medical care, psychological/psychiatric therapy, livelihood support and more. The goal of these services is to help residents rebuild their lives and reintegrate into society.

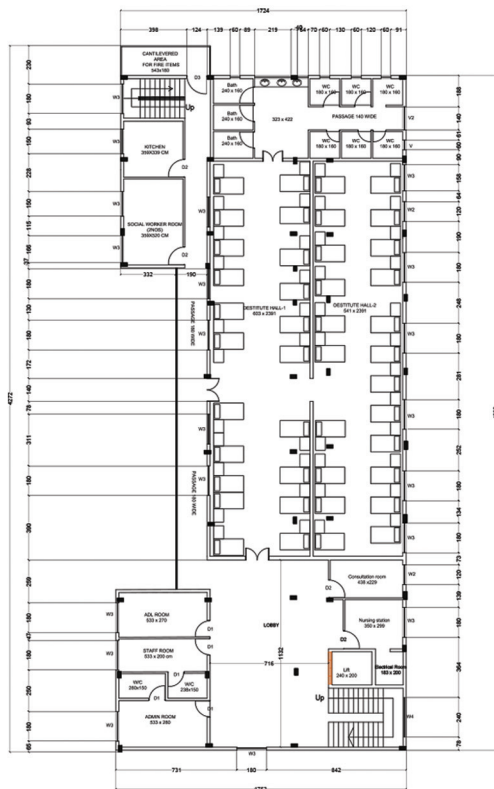


BUILDING FUTURES CHILD CARE CENTRE

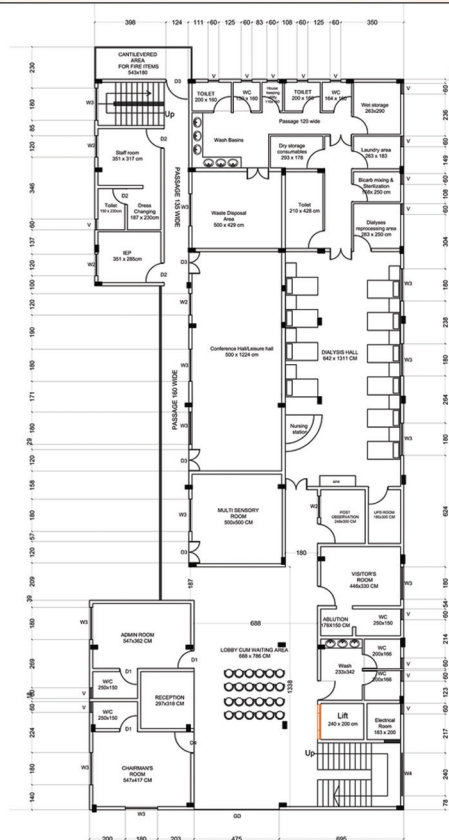
We initiated this project with the notion of helping orphaned children who have lost their parent(s). This program is designed as a non-institutional care and holistic support system. The idea is to provide basic income for women, enabling the less robust economic sectors to participate in socio-economic growth.

FLOOR PLAN

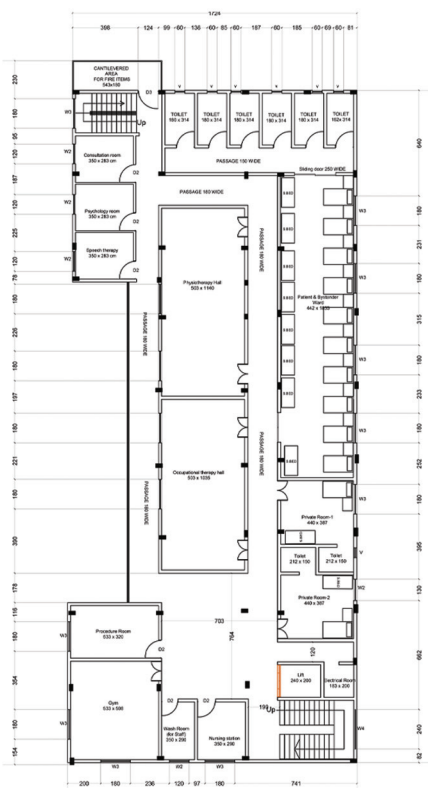
GROUND FLOOR



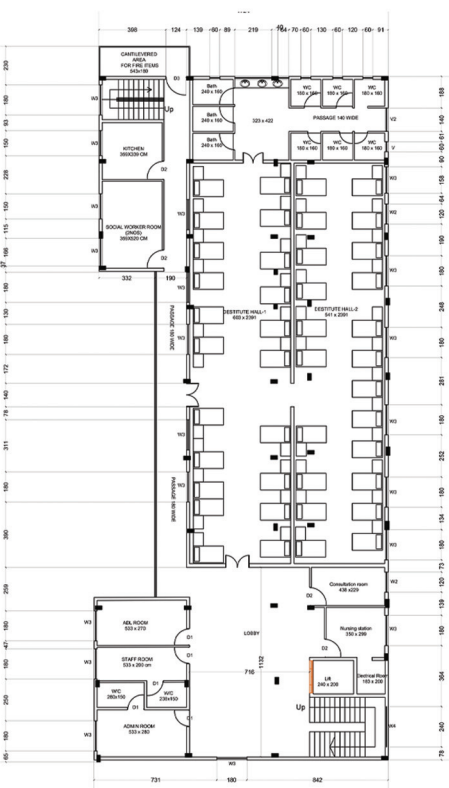
FIRST FLOOR



SECOND FLOOR



THIRD FLOOR





**" YOU CAN SUPPORT US
IN MANY WAYS
BY DONATING MONEY,
VOLUNTEERING YOUR TIME,
SPREADING THE WORD OR
ADVOCATING FOR POLICY CHANGES"**

DONATE NOW

UPI Id : msdayarehabilitationtrust.eazypay@icici

BANK DETAILS
DAYA REHABILITATION TRUST
ICCI BANK, KANJIRAPPALLY
KOTTAYAM DIST
A/C NO: 022101003907
IFSC : ICICI0000746



Thanaal

Kanjirappally

Daya Rehabilitation Trust - Reg. No. 9/08
Kanjirappally (PO) - 686507
Kottayam District

☎ +91 8848276274 ✉ thanalkanjirappally@gmail.com