

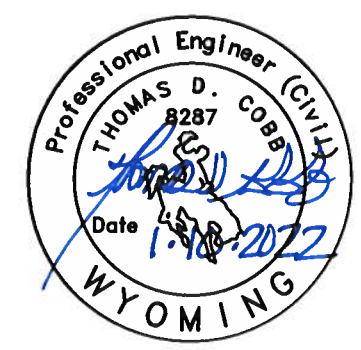
CITY OF CHEYENNE  
GREATER CHEYENNE GREENWAY  
DESTINATION WAYFINDING SIGNAGE PLAN,  
PHASE IV  
LARAMIE COUNTY, WYOMING



APPROVALS



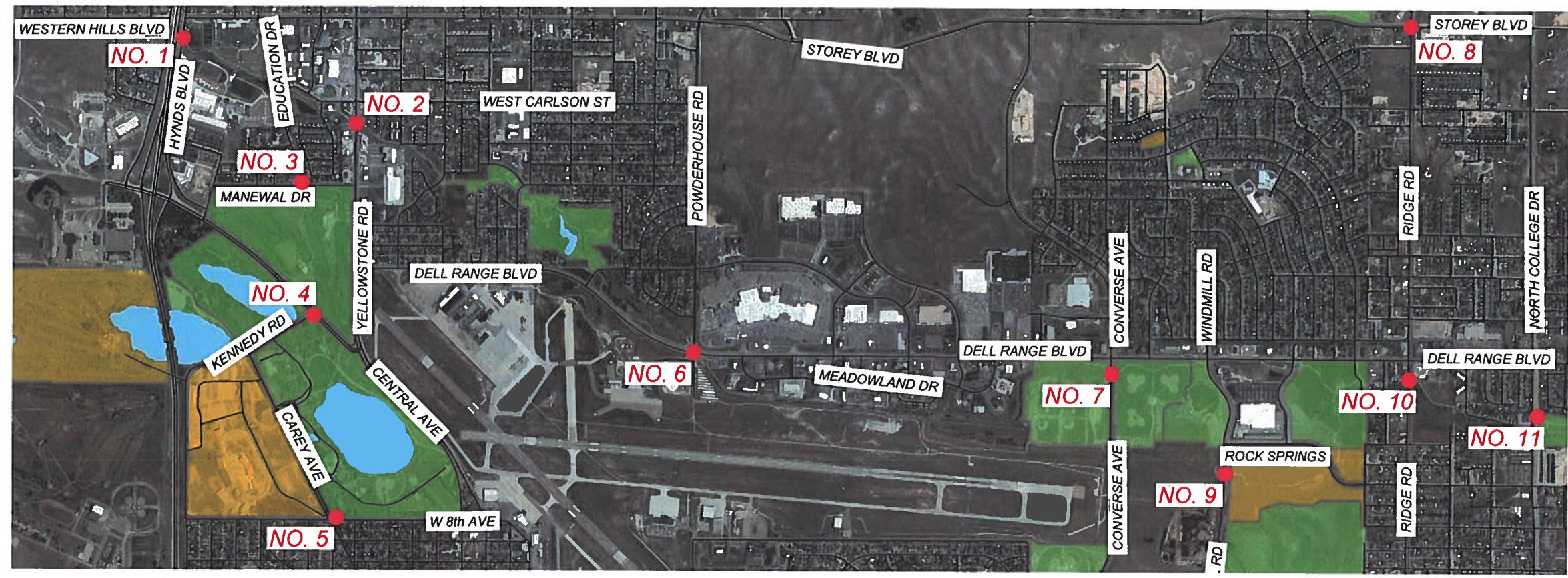
OVERALL DESIGN



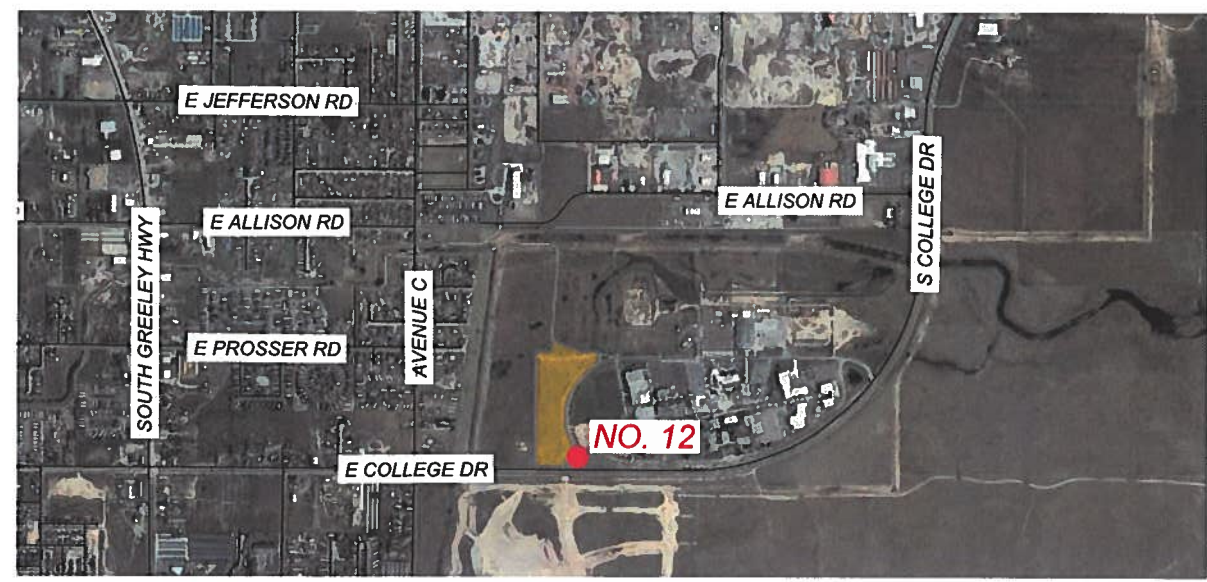
STRUCTURAL DESIGN



AREA MAP



DRY CREEK/NORTH LINK/NORTH CHEYENNE

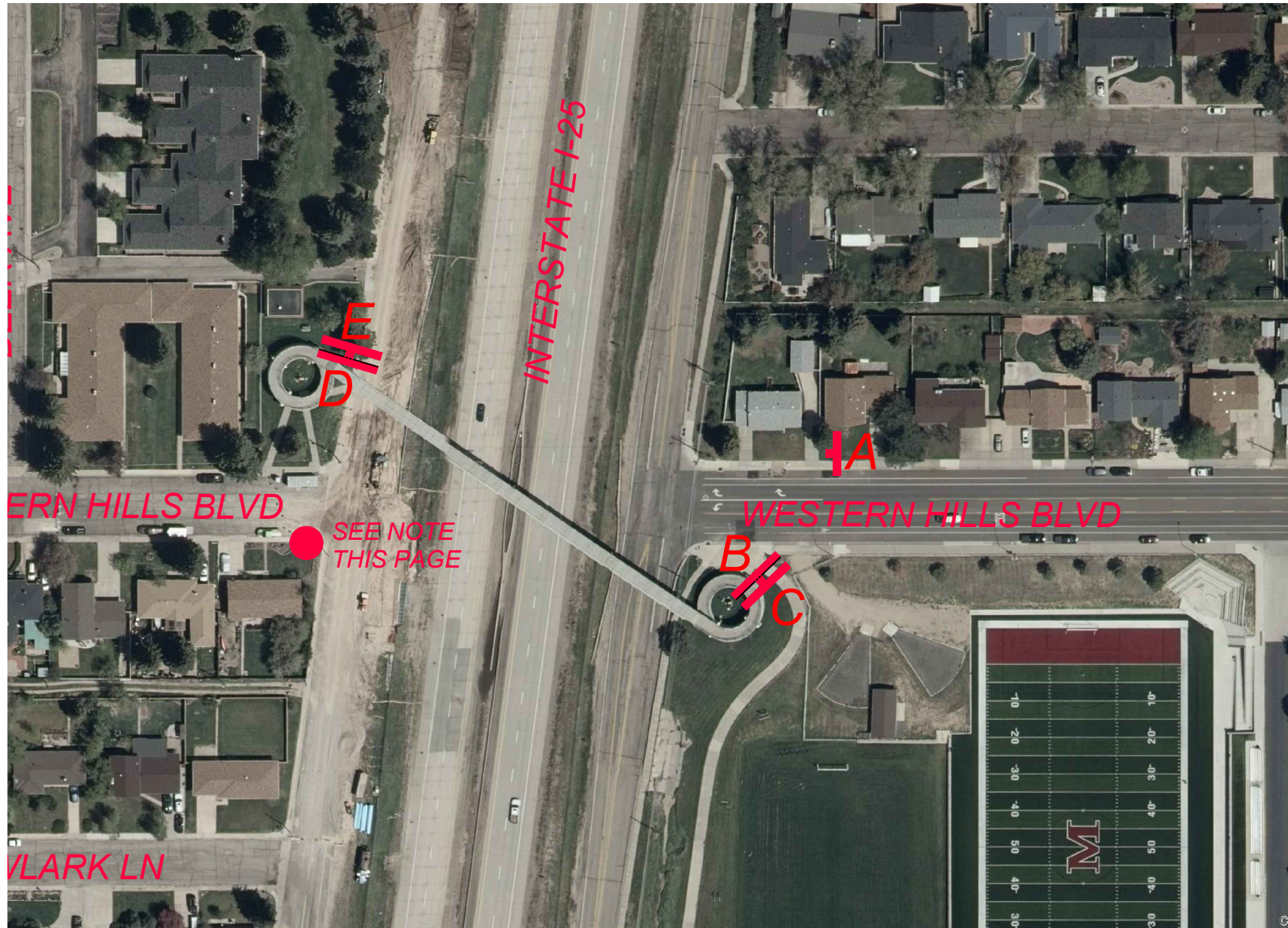


SOUTH LINK

Index of Sheets


SHEET NO.	
WF 01	COVER SHEET
WF 02	AREA 1 DETAIL, DRY CREEK, I-25 OVERPASS.
WF 03	AREA 2 DETAIL, DRY CREEK, YELLOWSTONE UNDERPASS
WF 04	AREA 3 DETAIL, NORTH LINK, EDUCATION DR. & MANEWAL DR.
WF 05	AREA 4 DETAIL, NORTH LINK, KENNEDY RD. & CENTRAL AVE.
WF 06	AREA 5 DETAIL, NORTH LINK, CAREY AVE. & W 8TH AVE.
WF-07	AREA 6 DETAIL, DRY CREEK, DELL RANGE BLVD & POWDERHOUSE RD..
WF-08	AREA 7 DETAIL, DRY CREEK, DELL RANGE BLVD & CONVERSE AVE..
WF-09	AREA 8 DETAIL, NORTH CHEYENNE, STOREY BLVD. & RIDGE RD.
WF-10	AREA 9 DETAIL, DRY CREEK, WINDMILL UNDERPASS
WF-11	AREA 10 DETAIL, DRY CREEK, DELL RANGE & RIDGE RD UNDERPASS
WF-12	AREA 11 DETAIL, DRY CREEK, N. COLLEGE RD & PARKVIEW DR UNDERPASS
WF-13	AREA 12 DETAIL, SOUTH LINK, LCCC/SWEETGRASS UNDERPASS
WF-14	SIGN SPECIFICATIONS
WF-15	SIGN DETAIL
WF-16	SIGN DETAIL
WF-17	SIGN DETAIL





**AREA 1 DETAIL MAP  
DRY CREEK  
I-25 OVERPASS**

**LEGEND:**

 1 POST - 1 SIDED SIGN  
(15"X24")

**NOTE:**

1. SIGN A TO BE PLACED ON EXISTING POST.
2. POST AND BIKE ROUTE SIGN TO BE REMOVED. MOVE TO EVERS BOULEVARD.



**A**



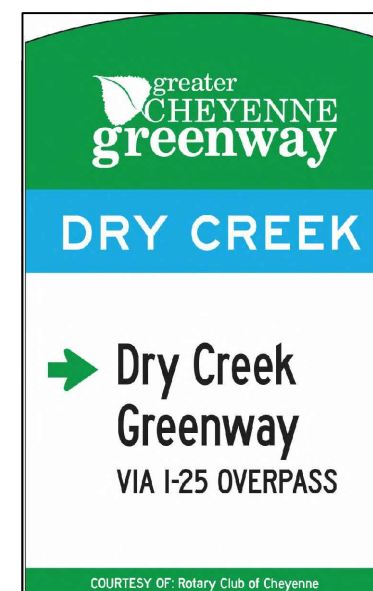
**B**



**C**



**D**



**E**

SIGNS ARE NOT SHOWN AT SCALE. FOR LAYOUT ONLY

DRAWN BY: JV  
DATE: 01/05/2023

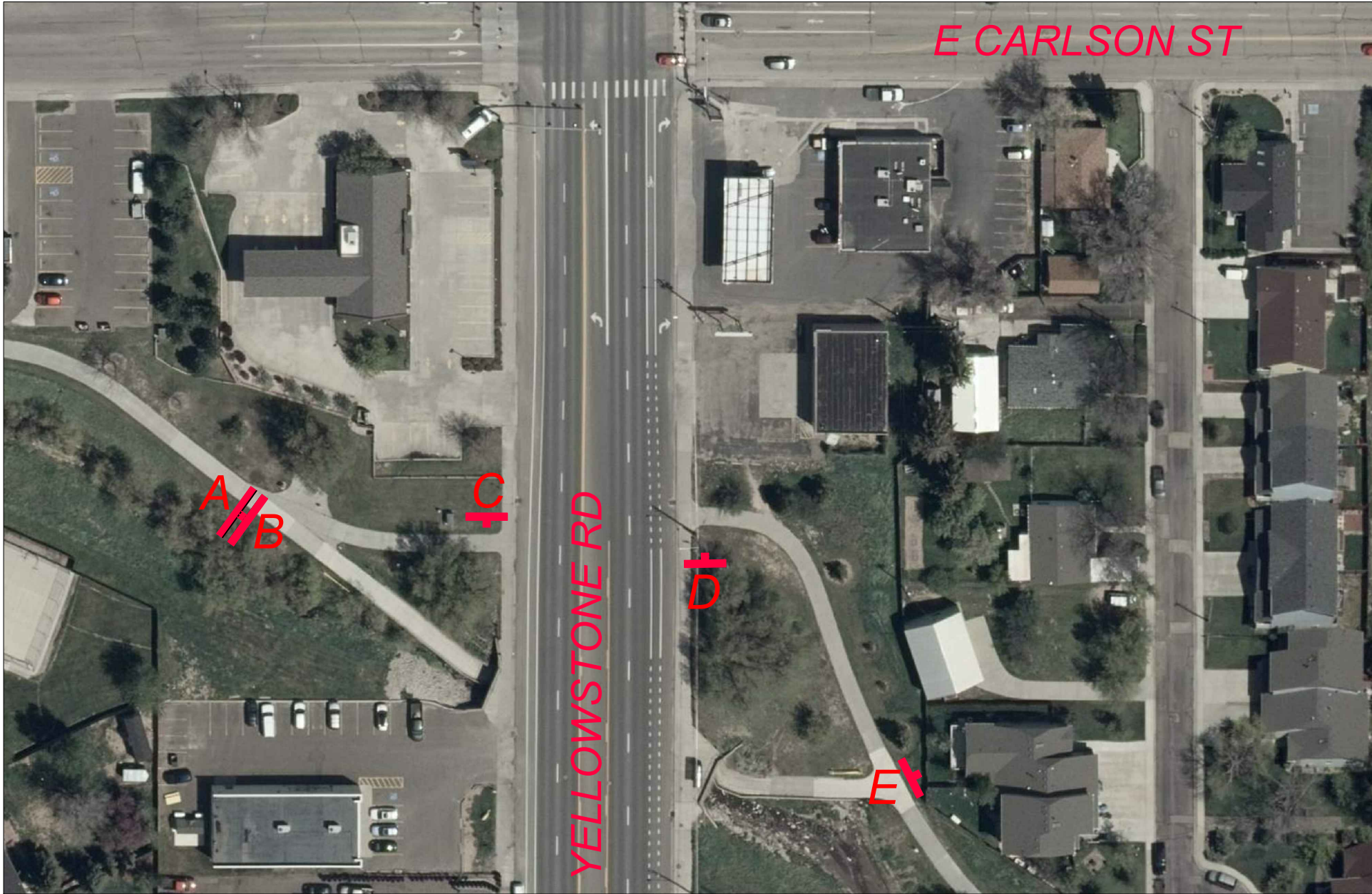
JOB TITLE: DESTINATION WAYFINDING SIGNAGE PLAN PHASE IV  
DRAWING NAME: SIGNAGE NO. 1 - DETAIL MAP

CITY OF CHEYENNE



DRAWING NO.  
WF-02  
SHEET 2 OF 17







**AREA 2 DETAIL MAP  
DRY CREEK,  
YELLOWSTONE  
UNDERPASS**

- NOTE:
- 1. SIGNS SHALL INCLUDE CONCRETE SLAB FOR THIS SITE.
  - 2. SIGNS C&D USE EXISTING POSTS AND REMOVE EXISTING SIGNS.



LEGEND:

-  1 POST - 1 SIDED SIGN (15"X24")
-  1 POST - 2 SIDED SIGN (15"X24")

SIGNS ARE NOT SHOWN AT SCALE. FOR LAYOUT ONLY



DRY CREEK


 Yellowstone Rd  
BIKE LANES  
GREENWAY ENDS 45 ft.

 Mylar Park .6 mi.


 Dell Range & Powderhouse  
UNDERPASS 1.4 mi.


COURTESY OF: Rotary Club of Cheyenne


A



DRY CREEK


 Central High & McCormick Jr High  
.4 mi.

 I-25 Overpass .6 mi.

 Western Hills .9 mi.  
VIA ON-STREET BIKE LANE

COURTESY OF: Rotary Club of Cheyenne

B



DRY CREEK

 Yellowstone  
UNDERPASS 130 ft.

COURTESY OF: Rotary Club of Cheyenne

C



DRY CREEK

 Yellowstone  
UNDERPASS 200 ft.

COURTESY OF: Rotary Club of Cheyenne

D



DRY CREEK

 Central High & McCormick Jr High  
.4 mi.

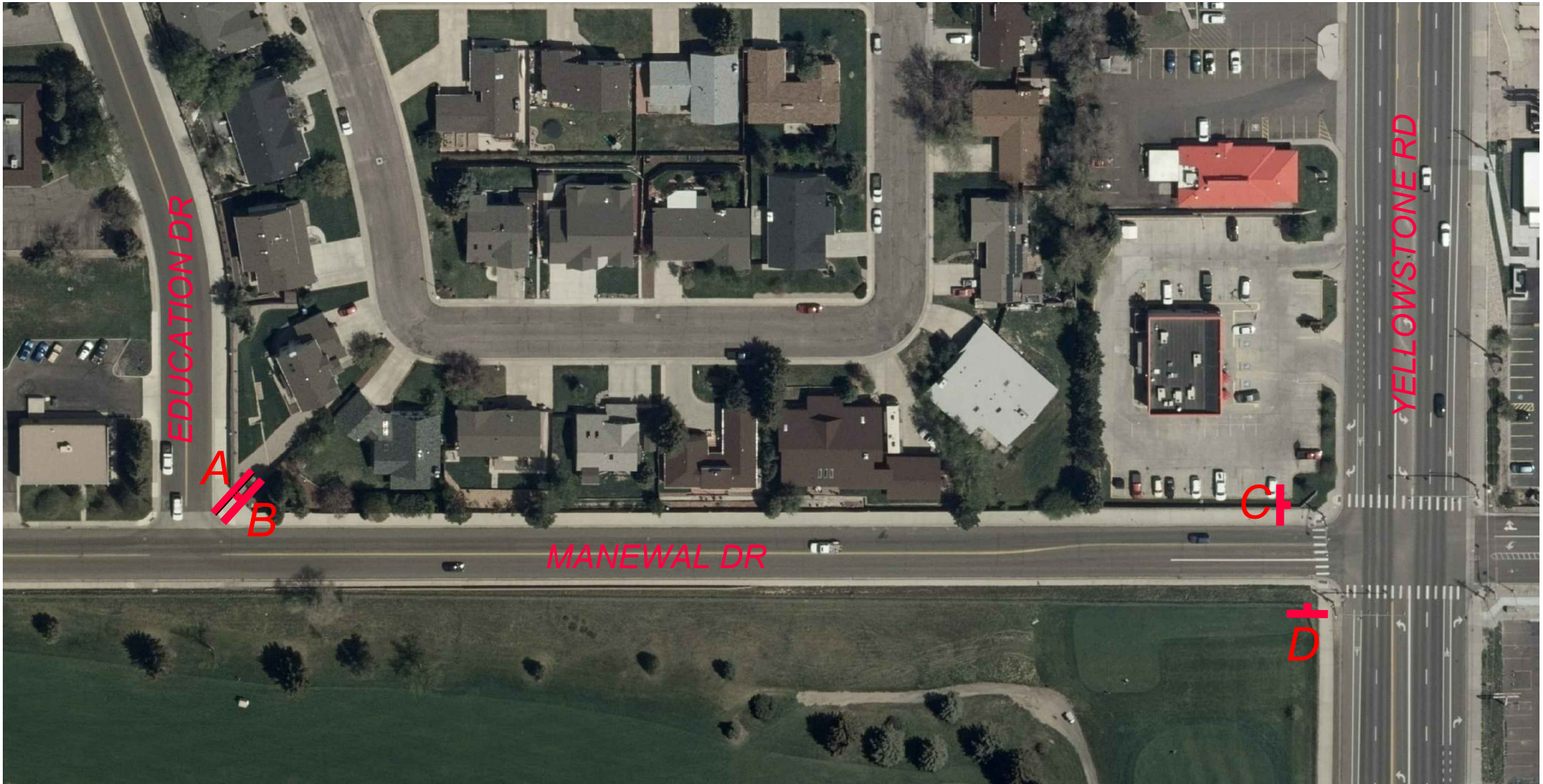
 Mylar Park .6 mi.

 Dell Range & Powderhouse  
UNDERPASS 1.4 mi.

COURTESY OF: Rotary Club of Cheyenne



E



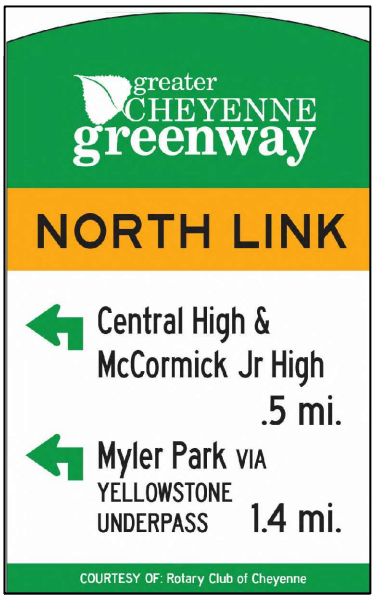
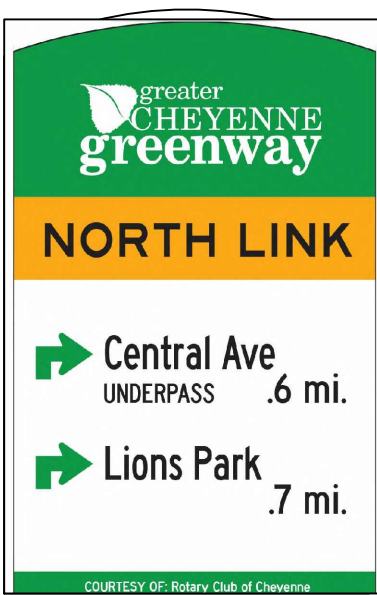
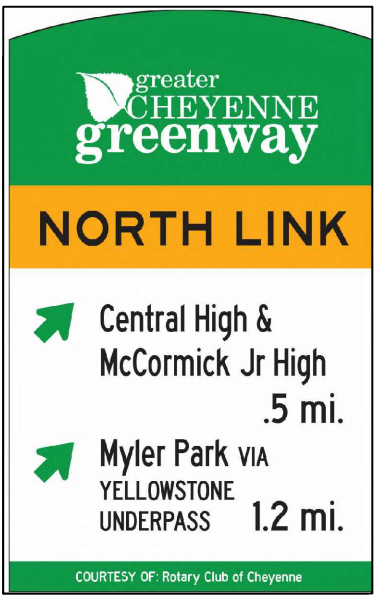


**AREA 3 DETAIL MAP  
NORTH LINK  
EDUCATION &  
MANEWAL DR**

**LEGEND:**

-  1 POST - 1 SIDED SIGN  
(15"X24")
-  1 POST - 2 SIDED SIGN  
(15"X24")

- NOTES:**
1. SIGNS A & B, CONCRETE SURFACE MOUNT OR BRACKET ON EXISTING CONCRETE POST.
  2. SIGN C, SURFACE MOUNT ON CONCRETE.
  3. SIGN D, MOUNT ON EXISTING STREET WAYFINDING SIGN.



SIGNS ARE NOT SHOWN AT SCALE. FOR LAYOUT ONLY

DRAWN BY: JV  
DATE: 01/05/2023

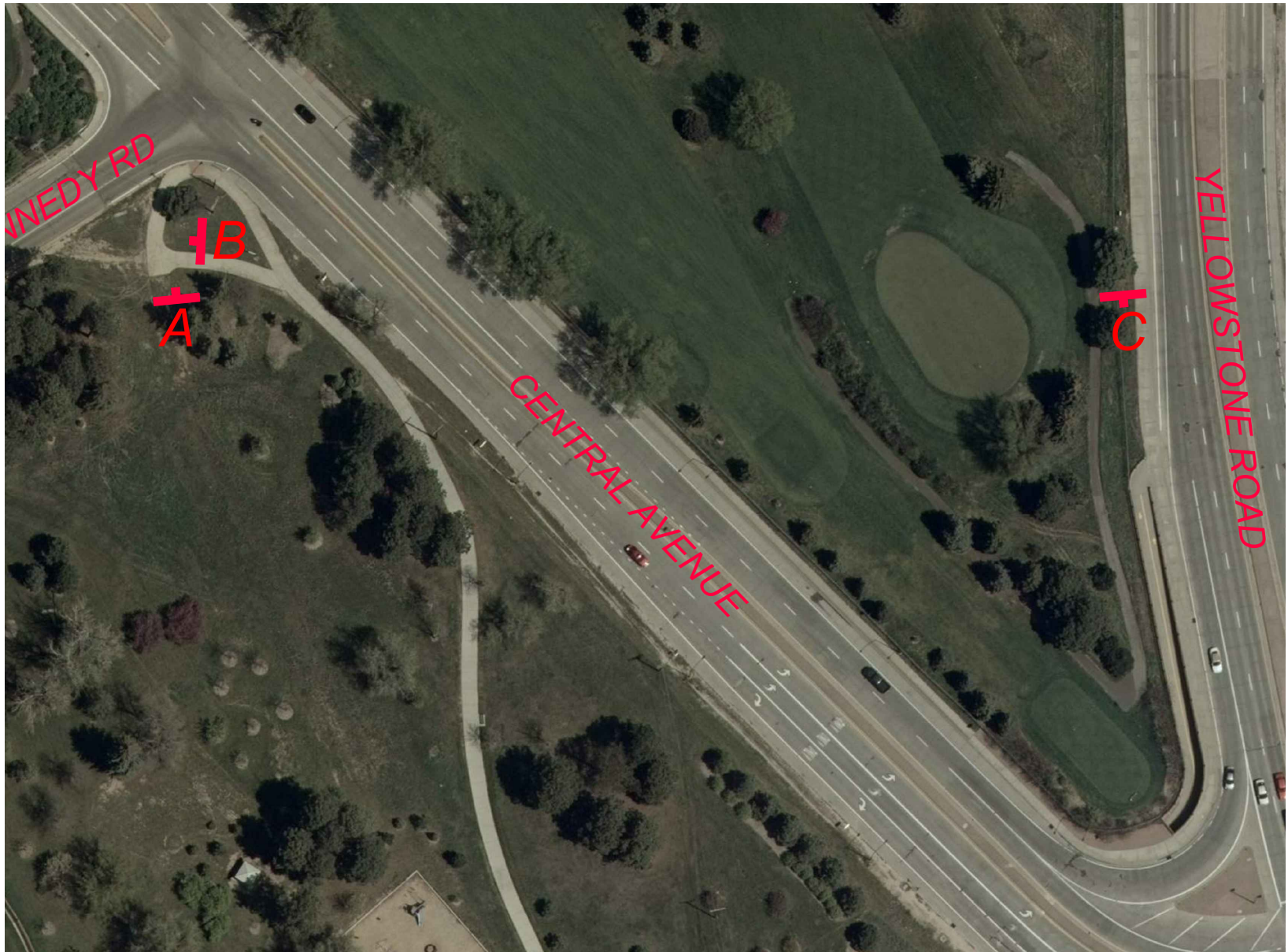
JOB TITLE: DESTINATION WAYFINDING SIGNAGE PLAN PHASE IV  
DRAWING NAME: SIGNAGE NO. 3 - DETAIL MAP

CITY OF CHEYENNE



DRAWING NO.  
WF-04  
SHEET 4 OF 17






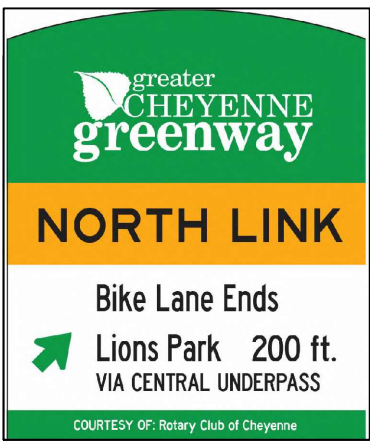
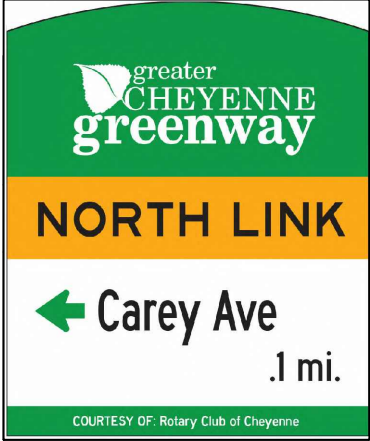
- NOTE:
1. SIGNS SHALL INCLUDE CONCRETE SLAB FOR THIS SITE.
  2. SIGN C SHALL USE EXISTING POST. REMOVE EXISTING SIGN AND REPLACE. LOWER SIGN TO APPROPRIATE HEIGHT PER PLANS.



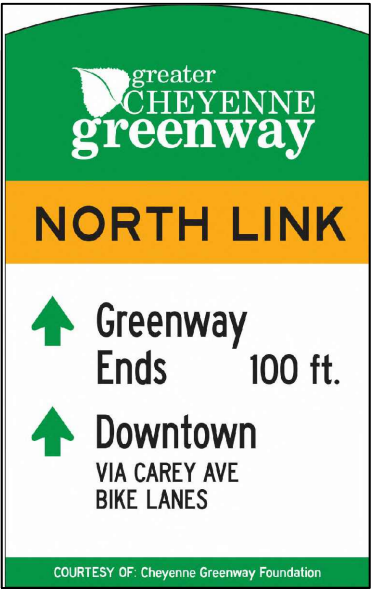
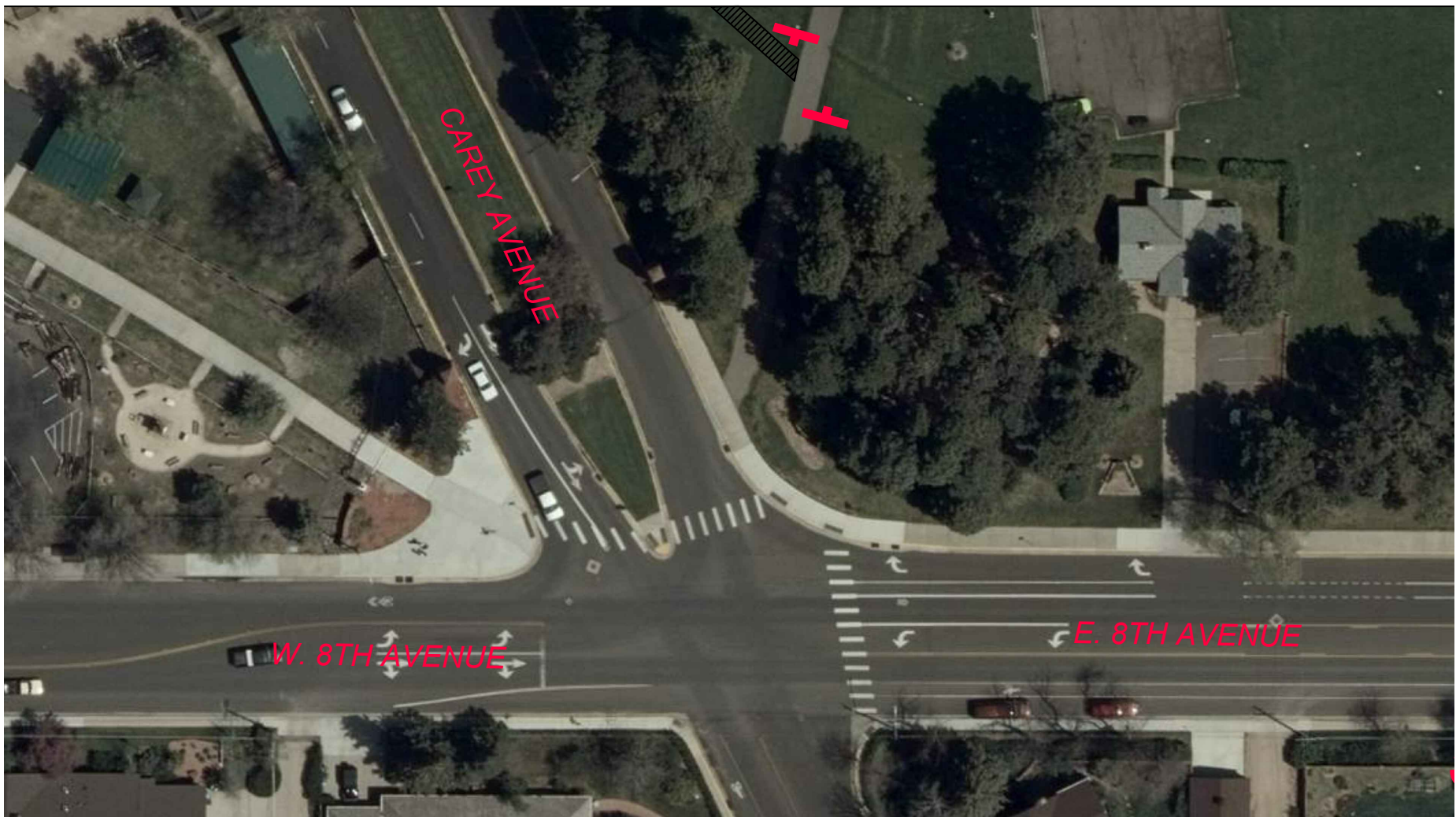
**AREA 4 DETAIL MAP  
NORTH LINK  
CAREY AVE &  
CENTRAL AVE**

LEGEND:


 1 POST - 1 SIDED SIGN  
(15"X24")







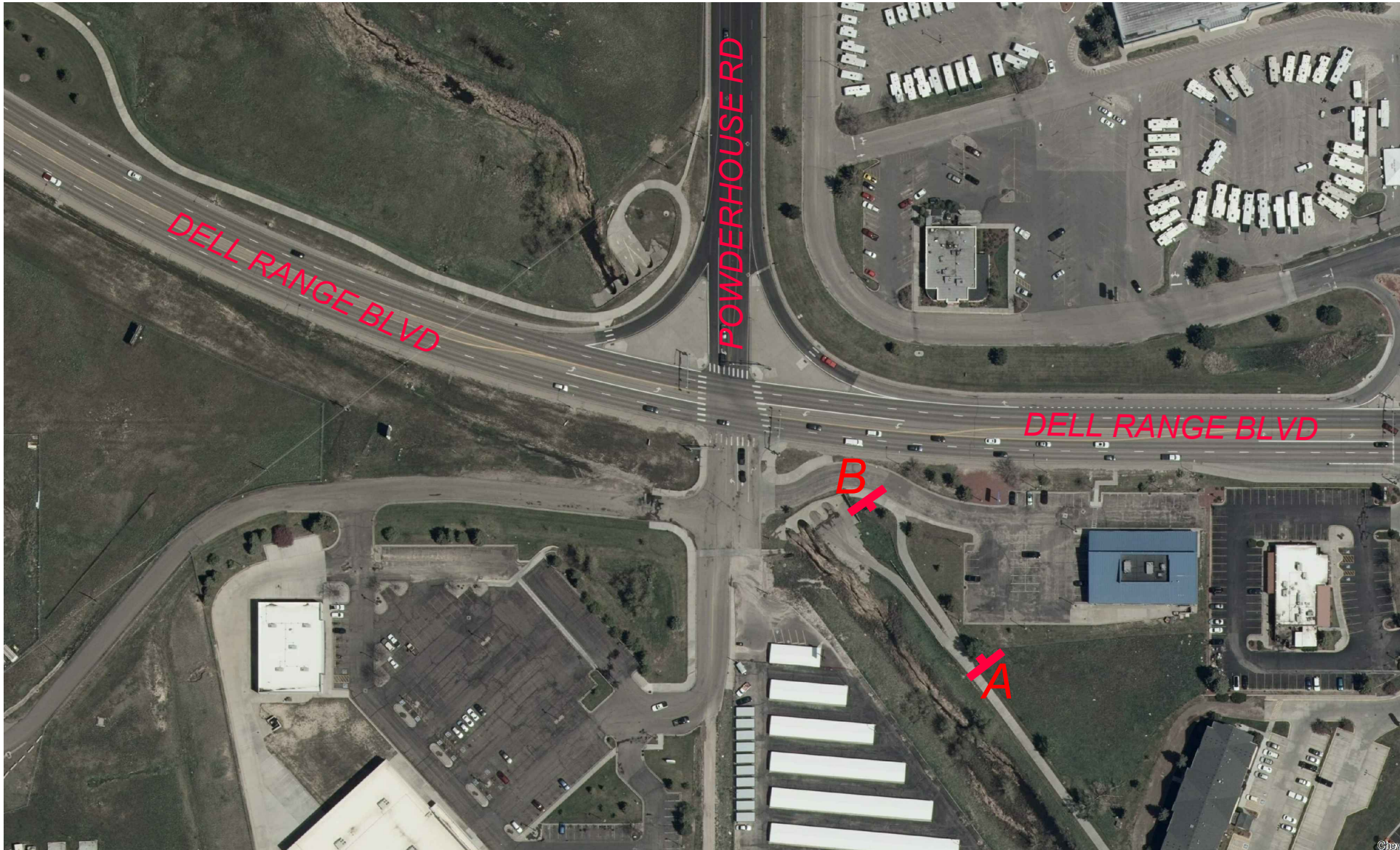
NOTE:  
SIGNS SHALL INCLUDE  
CONCRETE SLAB FOR THIS SITE.

LEGEND:  
 1 POST - 1 SIDED SIGN  
(15"X24")



SIGNS ARE NOT SHOWN AT SCALE. FOR LAYOUT ONLY





A




B

NOTE:  
SIGNS SHALL INCLUDE  
CONCRETE SLAB FOR THIS SITE.



**AREA 6 DETAIL MAP  
DRY CREEK  
DELL RANGE AVE &  
POWDERHOUSE RD**

LEGEND:

 1 POST - 1 SIDED SIGN  
(15"X24")

SIGNS ARE NOT SHOWN AT SCALE. FOR LAYOUT ONLY

DRAWN BY: JV  
DATE:01/05/2023

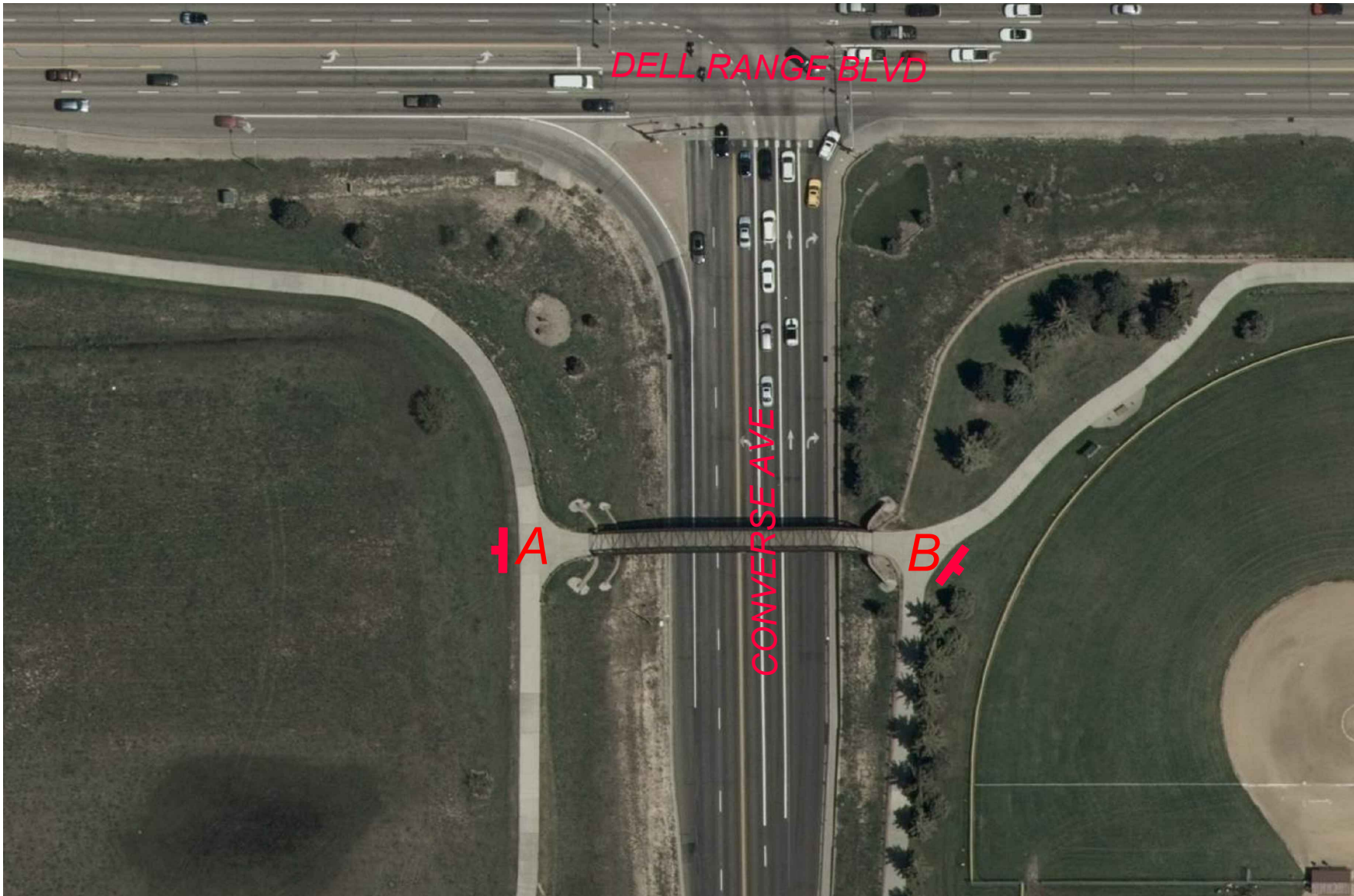
JOB TITLE:DESTINATION WAYFINDING SIGNAGE PLAN PHASE IV  
DRAWING NAME: SIGNAGE NO. 6 - DETAIL MAP

CITY OF CHEYENNE



DRAWING NO.  
WF-07  
SHEET 7 OF 17






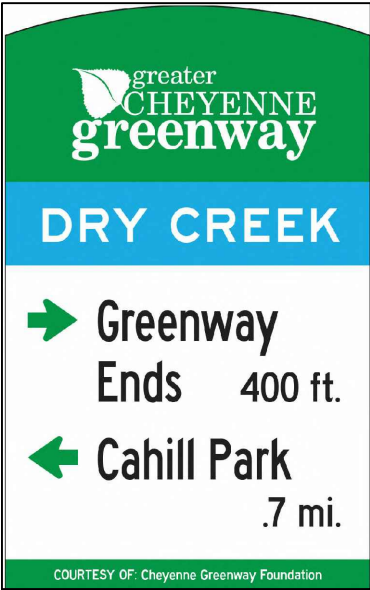
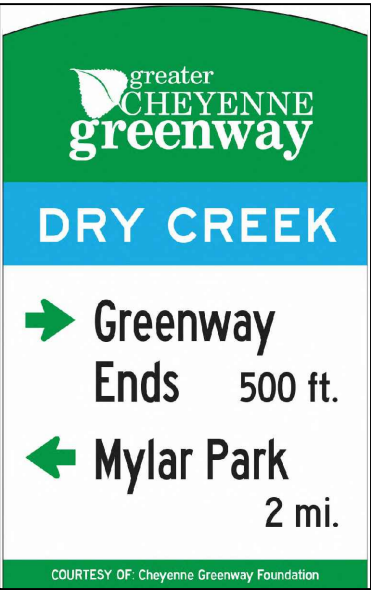
NOTE:  
SIGNS SHALL INCLUDE  
CONCRETE SLAB FOR THIS SITE.



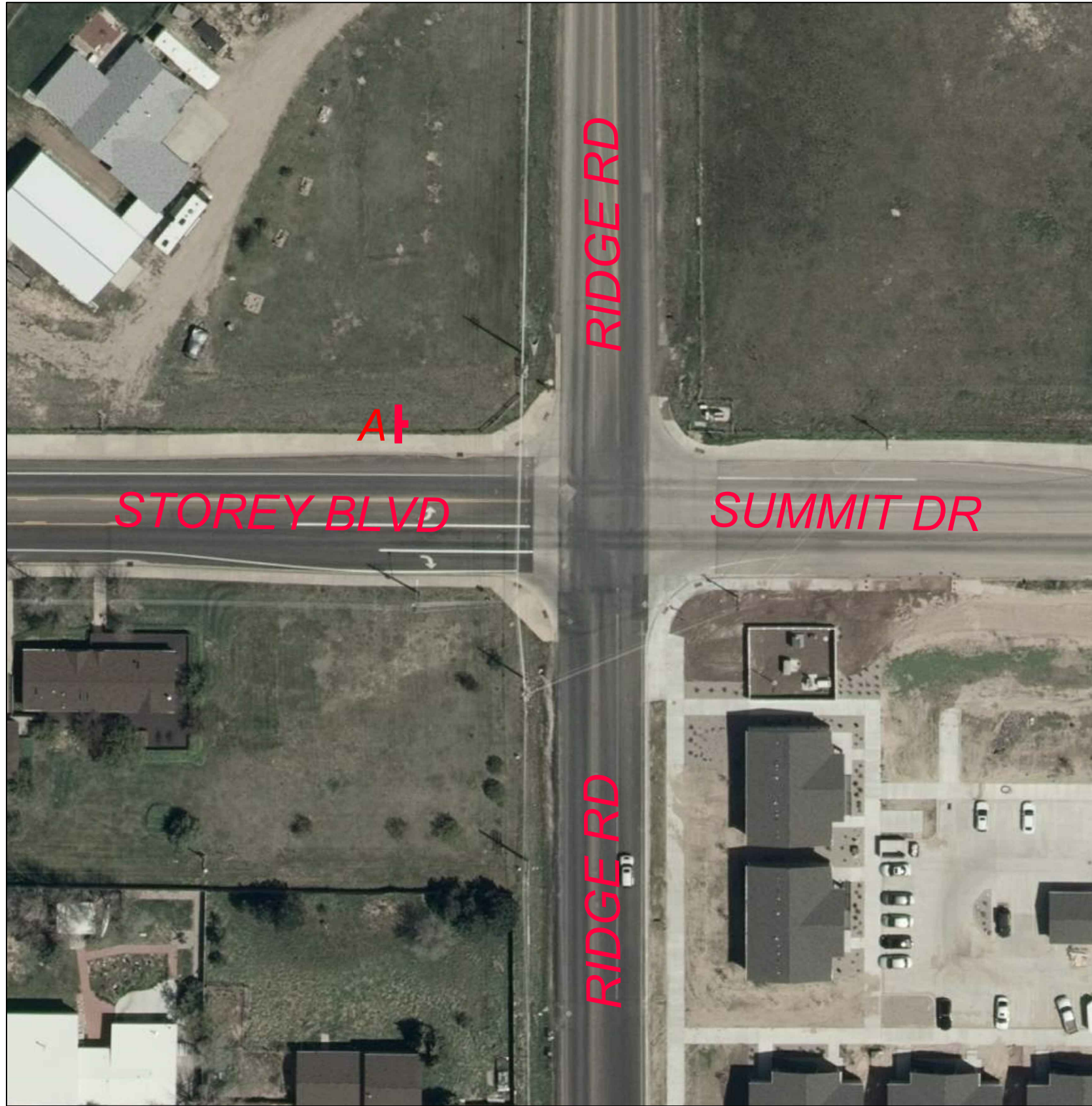
**AREA 7 DETAIL MAP  
DRY CREEK  
DELL RANGE BLVD  
& CONVERSE AVE**

LEGEND:

 1 POST - 1 SIDED SIGN  
(15"X24")

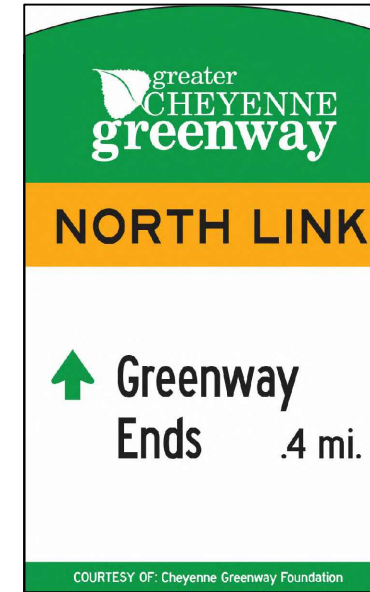






NOTE:  
SIGNS SHALL INCLUDE  
CONCRETE SLAB FOR THIS SITE.

SIGNS ARE NOT SHOWN AT SCALE. FOR LAYOUT ONLY



A



**AREA 8 DETAIL MAP  
NORTH CHEYENNE  
STOREY BLVD &  
RIDGE RD**

LEGEND:



1 POST - 1 SIDED SIGN  
(15"X24")

DRAWN BY: JV  
DATE: 01/05/2023

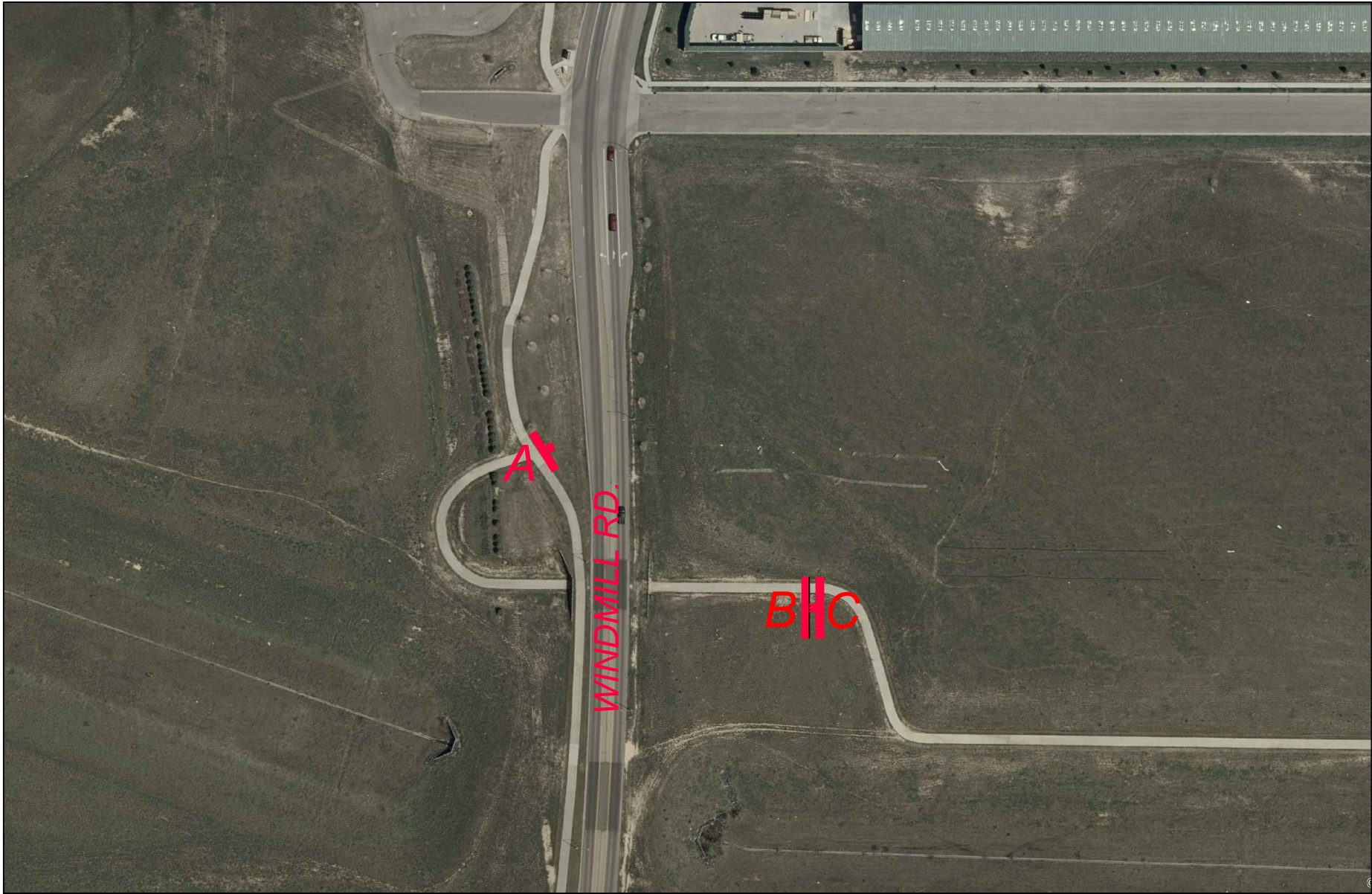
JOB TITLE: DESTINATION WAYFINDING SIGNAGE PLAN PHASE IV  
DRAWING NAME: SIGNAGE NO. 8 - DETAIL MAP

CITY OF CHEYENNE

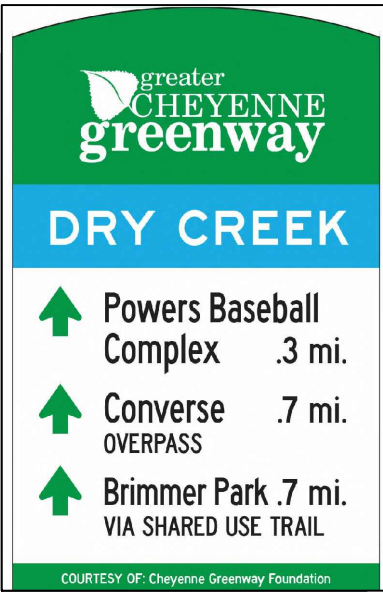
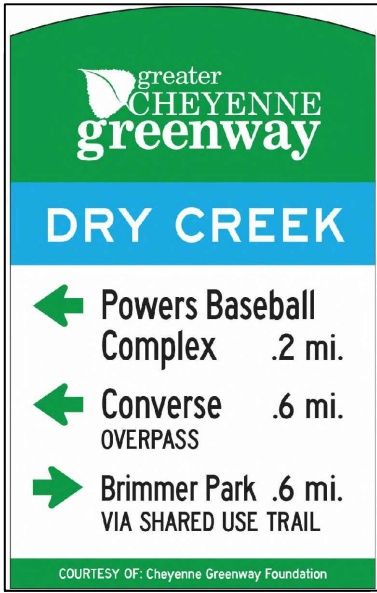


DRAWING NO.  
WF-09  
SHEET 9 OF 17







**AREA 9 DETAIL MAP  
DRY CREEK  
WINDMILL  
UNDERPASS**



**NOTE:**  
SIGNS SHALL INCLUDE  
CONCRETE SLAB FOR THIS SITE.

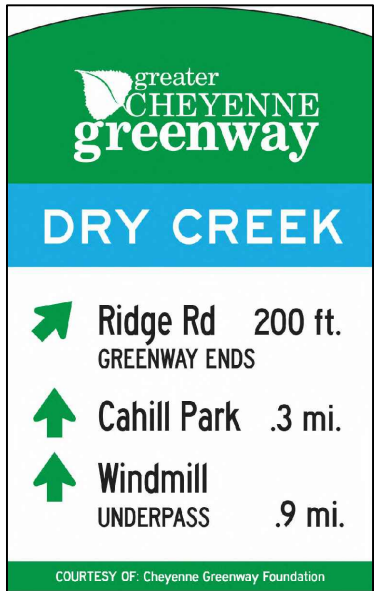
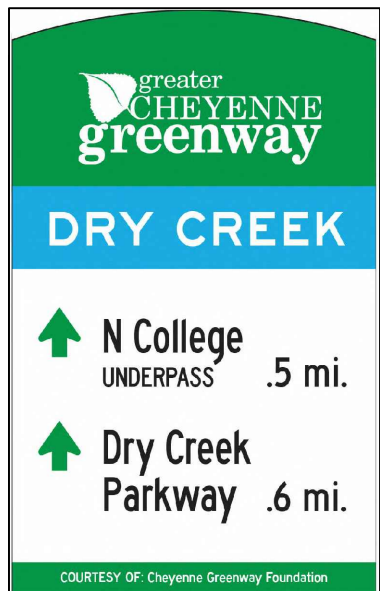
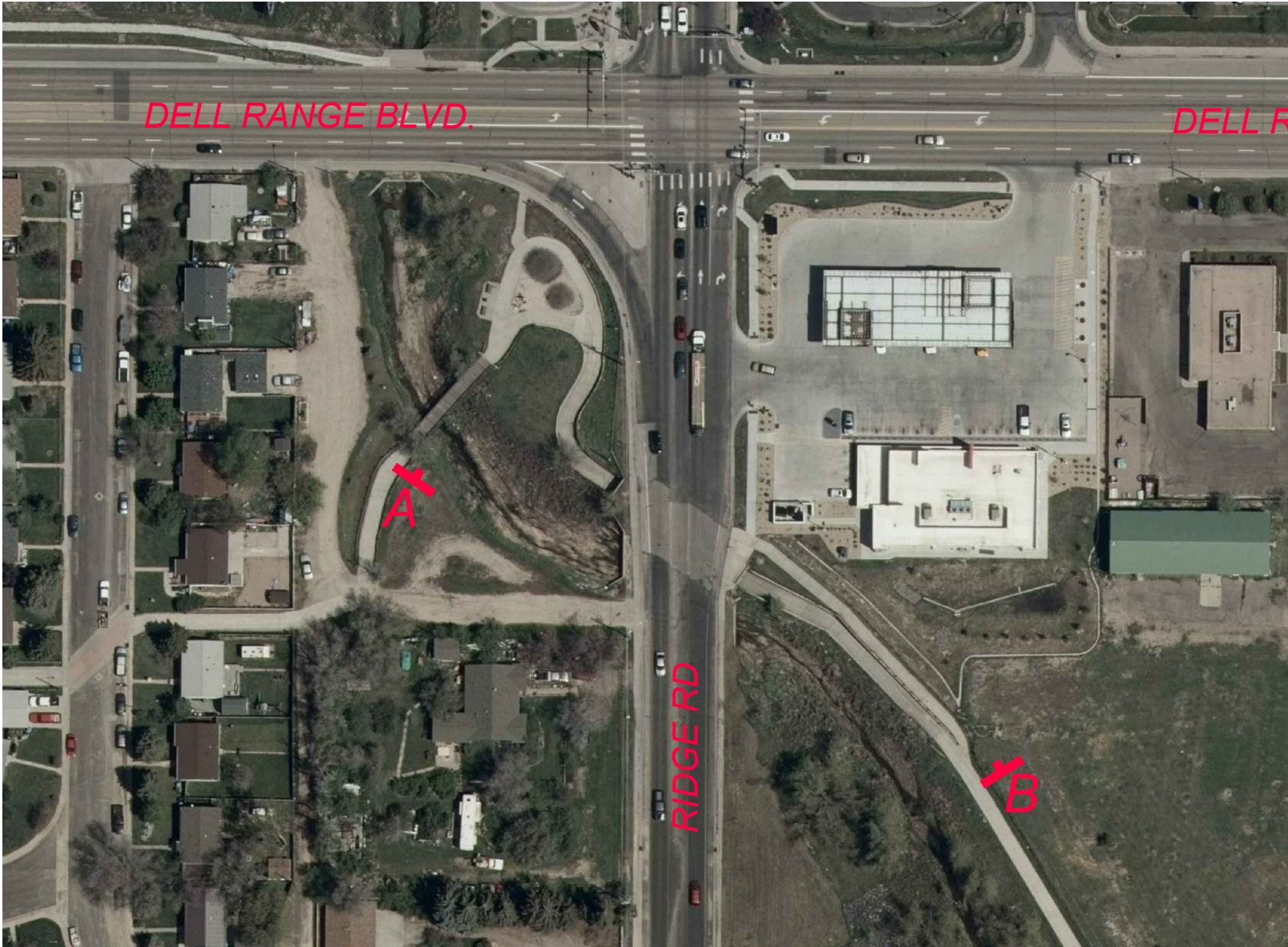
**LEGEND:**

-  1 POST - 1 SIDED SIGN  
(15"X24")
-  1 POST - 2 SIDED SIGN  
(15"X24")

SIGNS ARE NOT SHOWN AT SCALE. FOR LAYOUT ONLY








**AREA 10 DETAIL MAP  
DRY CREEK  
RIDGE RD & DELL  
RANGE UNDERPASS**

NOTE:  
SIGNS SHALL INCLUDE  
CONCRETE SLAB FOR THIS SITE.

LEGEND:

 1 POST - 1 SIDED SIGN  
(15"X24")



SIGNS ARE NOT SHOWN AT SCALE. FOR LAYOUT ONLY

DRAWN BY: JV  
DATE: 01/05/2023

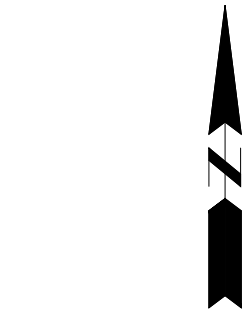
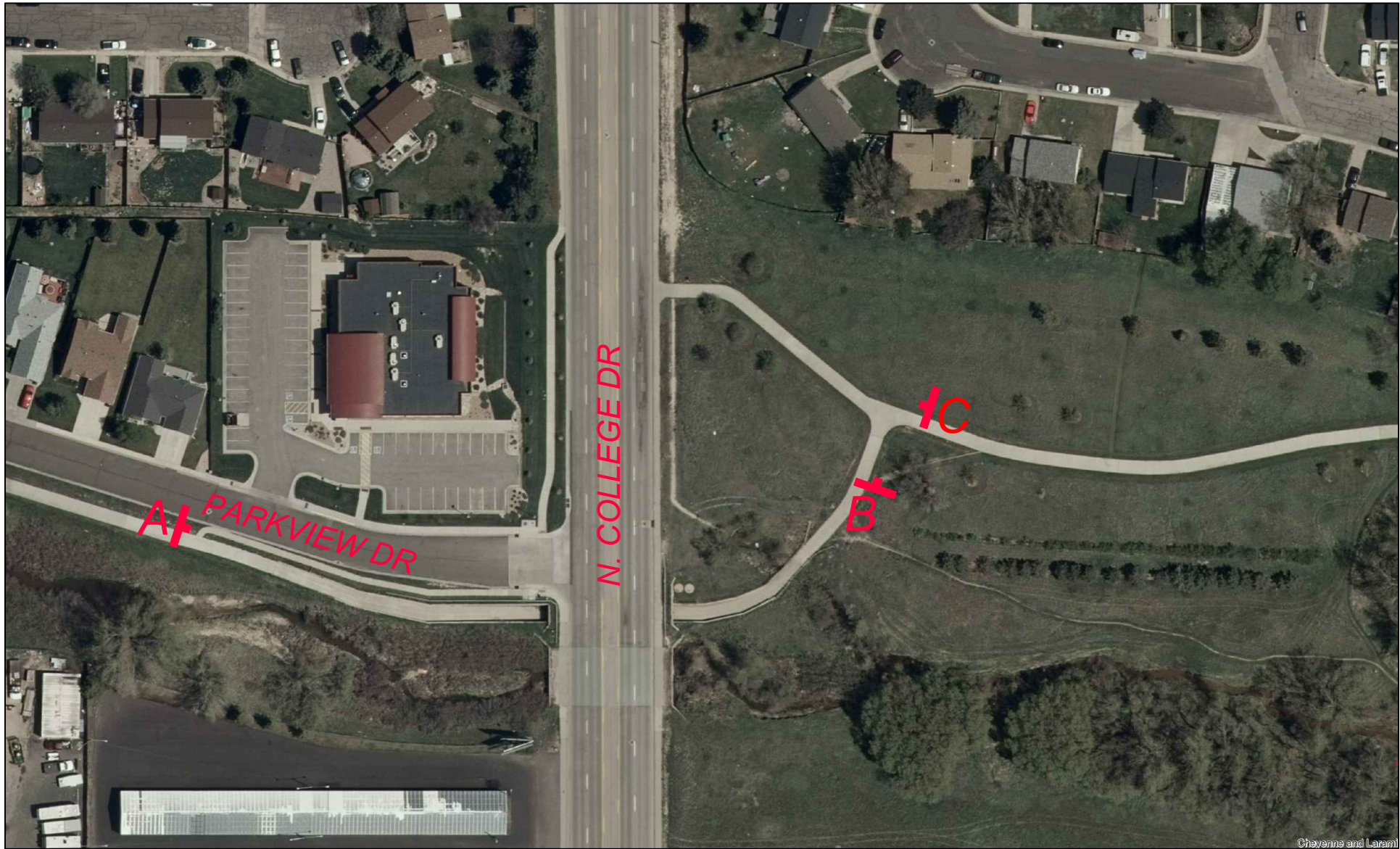
JOB TITLE: DESTINATION WAYFINDING SIGNAGE PLAN PHASE IV  
DRAWING NAME: SIGNAGE NO. 10 - DETAIL MAP

CITY OF CHEYENNE

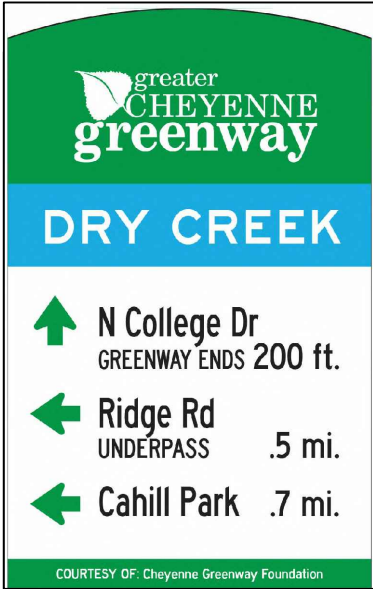


DRAWING NO.  
WF-11  
SHEET 11 OF 17






**AREA 11 DETAIL MAP  
DRY CREEK  
COLLEGE &  
PARKSIDE  
UNDERPASS**



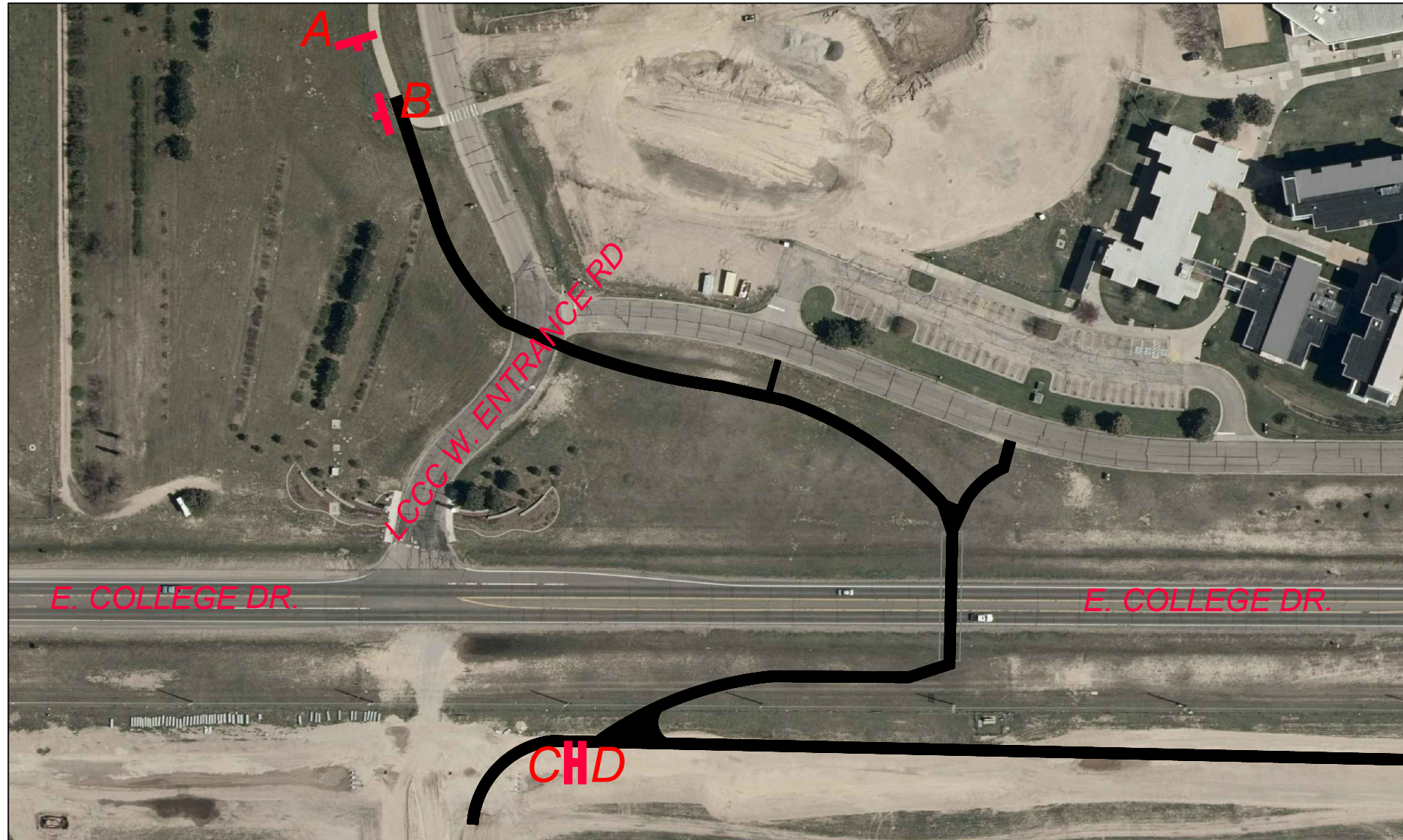
**LEGEND:**

 1 POST - 1 SIDED SIGN  
(15"X24")

**NOTE:**  
SIGNS SHALL INCLUDE  
CONCRETE SLAB FOR THIS SITE.

SIGNS ARE NOT SHOWN AT SCALE. FOR LAYOUT ONLY





NOTES:

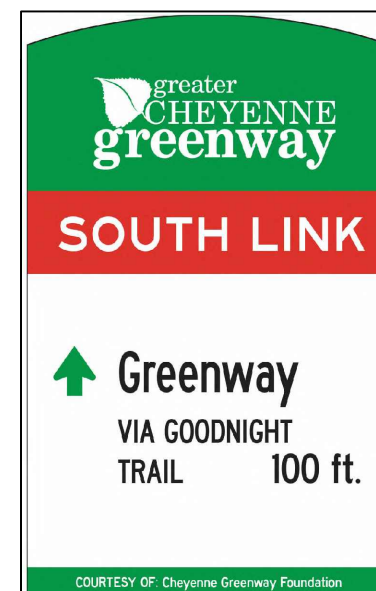
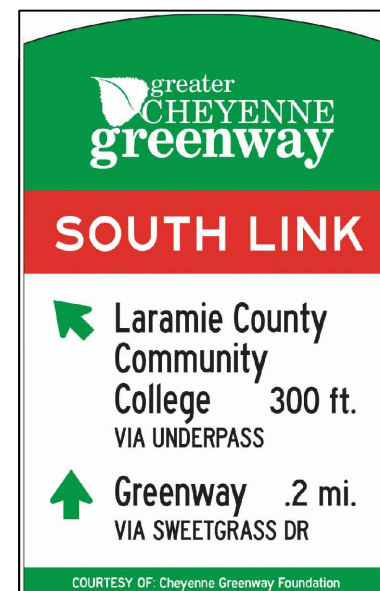
1. SIGNS SHALL INCLUDE CONCRETE SLAB FOR THIS SITE.



**AREA 12 DETAIL MAP  
SOUTH LINK  
LCCC/SWEETGRASS  
UNDERPASS**

LEGEND:

- I** 1 POST - 1 SIDED SIGN  
(15"X24")
- H** 1 POST - 2 SIDED SIGN  
(15"X24")



SIGNS ARE NOT SHOWN AT SCALE. FOR LAYOUT ONLY

DRAWN BY: JV  
DATE: 01/05/2023

JOB TITLE: DESTINATION WAYFINDING SIGNAGE PLAN PHASE IV  
DRAWING NAME: SIGNAGE NO. 12 - DETAIL MAP

CITY OF CHEYENNE



DRAWING NO.  
WF-13  
SHEET 13 OF 17



Part 1 - General

- 1.01 Description of work.
- A. Fabricate and install signage as detailed.
- 1.02 Price of installed signage is to include:
- A. Location coordination with project manager.  
B. Locates and excavation to avoid damage to utilities  
C. Traffic Control coordination with the City  
D. Excavation, concrete slab placement, dirt removal, cleanup and patch.  
E. Installation  
F. All hardware as necessary for installation.
- 1.03 Drawings and Specifications
- A. Drawings and specifications appearing herein are meant to document design intent and general construction details.  
B. Written dimensions of drawings shall govern. Details take precedence over scale drawings. Drawings and specifications are intended to agree. Should discrepancies occur between drawings and specifications, do not work without clarification.  
C. The fabricator shall honor design specifications and will not effectively modify any product design during fabrication without the consent of the project manager.  
D. Where construction details are not contained in the drawings or specifications, the fabricator shall value engineer sign construction to accomodate the design intent at the lowest possible price while maintaining the level of quality required for the intended use. The fabricator shall then provide a shop drawing depicting the recommended construction details for review by the City/Project Manager prior to fabrication.  
E. The fabricator shall provide written product warranty for all signs and the service supplied for a period of no less than two years from the date of installation and shall faithfully honor such guarantees.  
F. The City of Cheyenne owns the rights to all drawings and specifications.
- 1.04 Fabricator Responsibilities
- A. Fabricator to deliver and install all signs.  
B. Fabricator to coordinate with project manager about signage installation for correct sequence and locations.  
C. If there are any questions, comments, suggestions, doubts, or concerns, please direct them to the Project Manager prior to continuing with the work. Project Manager to respond within two working days.

Part 2 - Materials

- 2.01 Sign Materials and Finishes
- A. Fabricator to submit certification that all materials conform to specification requirements and that fabricator is in agreement with the selected materials and construction is proper, compatible and adequate for the application shown.  
B. The fabricator shall not misrepresent product quality or substitute inferior products or material for those presented as samples, prototypes or submittals.  
C. Anchors, inserts, fasteners and adhesive shall be compatible with sign materials and shall not result in galvanic action or chemical interaction of adhesives and shall be demonstrable and sufficient strength for intended use. Bolts and fasteners shall meet ASTM A 307 or SAE grade 2.  
D. Lettering and background on all sign types shall be reflectorized to show the same color day and night. Recommended material, 3M Scotchlite Reflective Graphic Film Series or approved equal.
- 2.02 Artwork and Imaging
- A. Sign graphics may be reproduced from PDF OR can be individually generated from typical layouts found in this package, in which case, fonts, colors, logos, etc. will be supplied by the Owner.  
B. Fabricator to provide final layout example (one) for City approval.
- 2.03 Submittals
- A. Sign fabricator to submit a sample paper pattern of all sign messages and symbols for all sign types showing spacing and style for City/Project Manager approval.  
B. Owner has provided stamped engineer certification for structural and mounting details for all sign types. This includes City requirements for wind load and break-away.  
C. Fabricator shall match Pantone and paint colors specified.
- 2.04 Fabrication/Installation Standards
- A. Fabricator to protect all other work from damage during sign installation; upon completion of sign installation; clean soiled signs; protect signs from damage until acceptance by Owner; repair any damage to other work to a level acceptable to the City/Project Manager.  
B. Sign package shall be fabricated in accordance with SEG D Code of Ethics/Manufacturing.  
C. Shop fabrication shall conform to accepted local and national standards.  
D. Sign package shall be fabricated of materials and processes which shall be free from defects which may impair their strength, durability, appearance or function.

Part 3 - Installation

- 3.01 Assembly
- A. Assemble sign faces to posts flush, true and accurately straight.  
B. All graphics shall be positioned level and square unless otherwise specified.
- 3.02 Sign Locations
- A. Each site has unique conditions, therefore, the sign fabricator will coordinate specific sign location and orientation with the Project Manager prior to excavation.  
B. Fabricator, Project Manager and Traffic Engineer or his/her representative shall walk sites and stake locations and provide final approval of all final sign locations.  
C. Fabricator to verify location on site prior to installation.  
D. Fabricator to coordinate with Project Manager about sign installation for correct sequence.  
E. All signs that require concrete slab surround to be installed shall be recompacted to 95% density prior to concrete pour.
- 3.03 Permits and Traffic Control
- A. Fabricator to provide any necessary coordination with City regarding sign permitting and traffic control during installation. Any personnel working within the public right of way must wear high visibility safety vests.  
B. All Traffic Control Plans must be approved by the City Traffic Engineer a minimum of two days before work begins.  
C. Sign fabricator to coordinate utility location and signage installation. Utilities may exist in all locations. Recommend staking and potholing at all sites. If there is any questions, comments, suggestions, doubts or concerns, please direct to Project Manager prior to continuing work.  
D. Sign fabricator to coordinate location of irrigations systems and signage installation. Irrigation systems may exist in many locations. Recommend staking and potholing at all sites. If there is any questions, comments, suggestions, doubts or concerns, please direct to Project Manager prior to continuing work.  
E. Signs to be located within the City R/W shall meet the criteria established in the Manual of Uniform Traffic Control Devices (MUTCD) and the City criteria for mounting heights and setbacks.
- 3.04 Acceptance
- A. The City of Cheyenne reserve the right to hold up to 10% of all invoices as retainer until satisfactory completion of the project to include punchlist items.

DRAWN BY: JV  
DATE: 01/05/2023

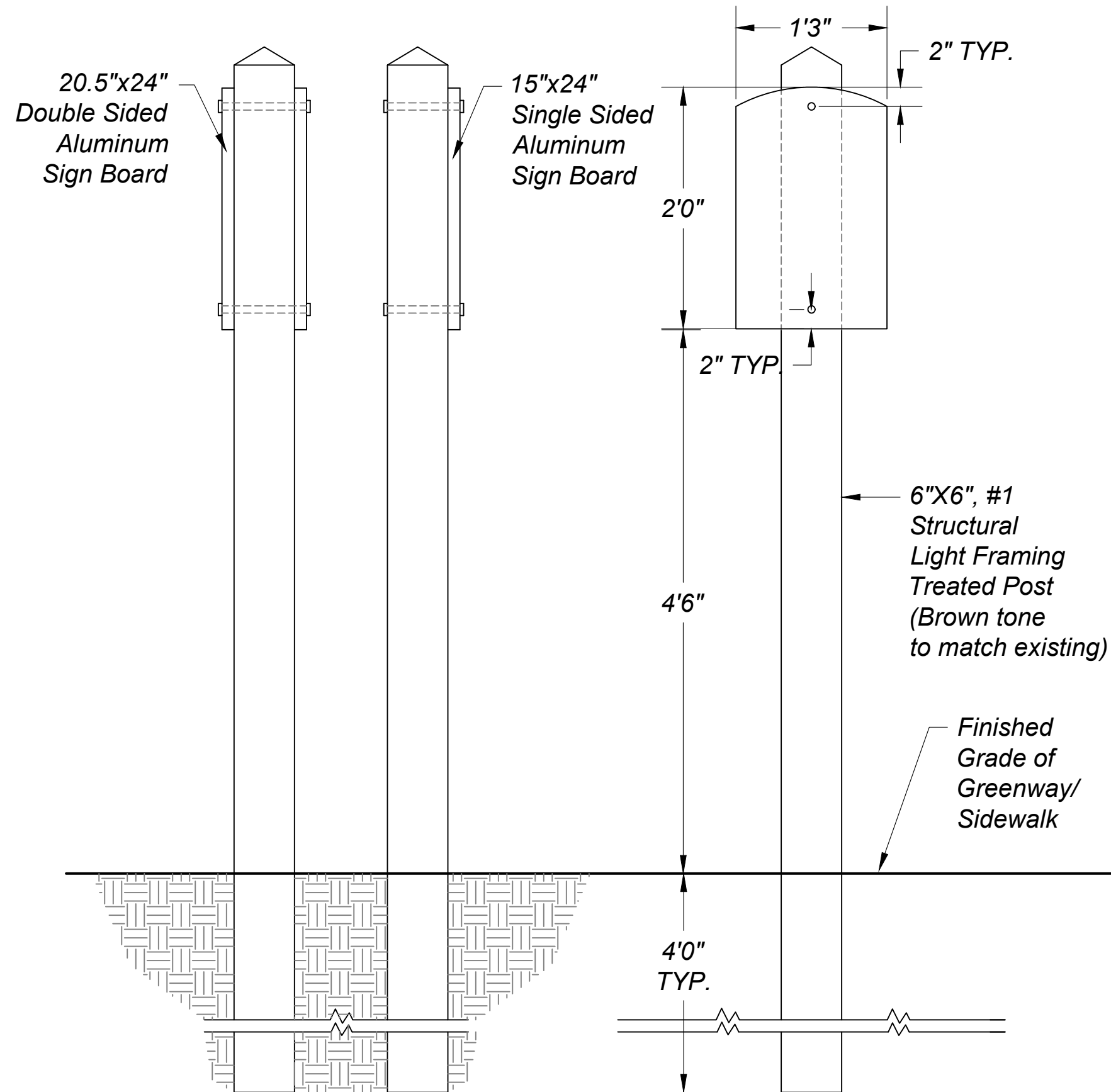
JOB TITLE:DESTINATION WAYFINDING SIGNAGE PLAN PHASE IV  
DRAWING NAME: SIGNAGE SPECIFICATIONS

CITY OF CHEYENNE



DRAWING NO.  
WF-14





#### NOTES:

- SIGN PLACEMENT:** Sign placement and mounting height shall be in accordance with the plans unless otherwise specified.
- POST EMBEDMENT:** Posts shall be directly embedded into the earth a minimum of four (4) feet and compacted.
- POST LENGTH:** Contractor shall be responsible for determining post length in conformance with the plans. Post length shall include embedment, clearance height and sign height.
- POST INSTALLATION:** Posts shall be set back from edge of pavement a minimum of three (3) feet.
- SIGN PANELS:** Sign panels shall be made of (0.125) inch anodized aluminum.
- HARDWARE:** All signs shall be attached directly to the post using six (6) inch length by three-eighths ( $\frac{3}{8}$ ) inch zinc coated hex head bolts and nylon self-locking nuts (Ny-loc or approved equal). Flat washers shall be used under the head of the bolt (1 ea.) and under the nut (1 ea.). Use T-Nut against post face. Hardware shall meet ASTM A 307 or SAE grade 2.
- MOUNTING HEIGHT:** Mounting height shall be 4'6" from bottom of lowest portion of sign to top of greenway/sidewalk.



Know what's below.  
Call before you dig.

DRAWN BY: JV  
DATE: 01/05/2023

JOB TITLE: DESTINATION WAYFINDING SIGNAGE PLAN PHASE IV

DRAWING NAME: SIGNAGE DETAILS

CITY OF CHEYENNE



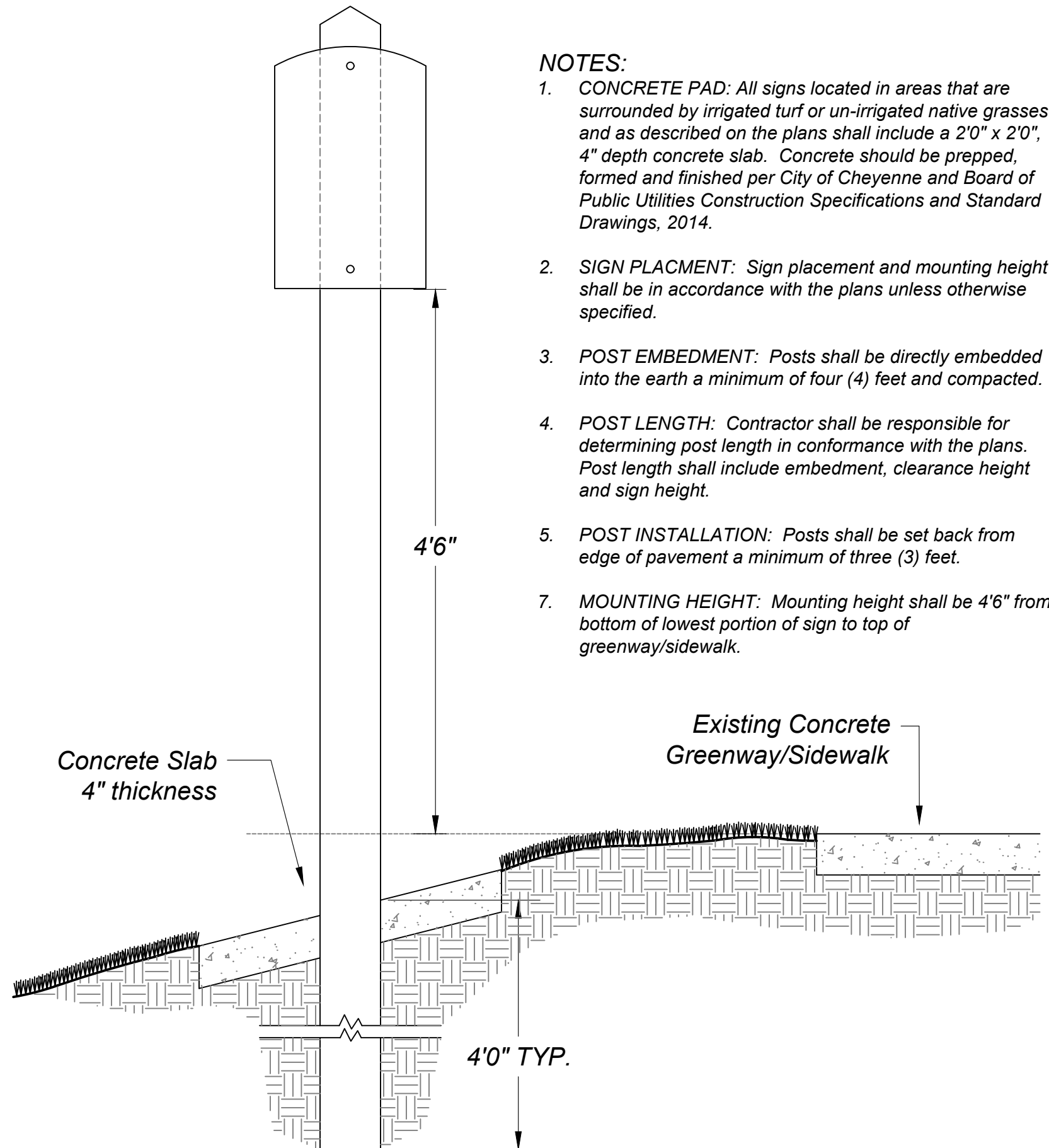
DRAWING NO.  
WF-15  
SHEET 15 OF 17





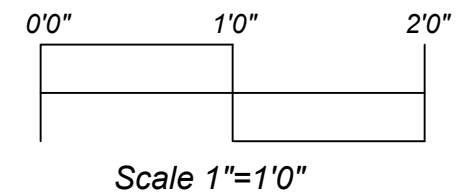
1. **CONCRETE PAD:** All signs located in areas that are surrounded by irrigated turf or un-irrigated native grasses and as described on the plans shall include a 2'0" x 2'0", 4" depth concrete slab. Concrete should be prepped, formed and finished per City of Cheyenne and Board of Public Utilities Construction Specifications and Standard Drawings, 2014.





**NOTES:**

1. **CONCRETE PAD:** All signs located in areas that are surrounded by irrigated turf or un-irrigated native grasses and as described on the plans shall include a 2'0" x 2'0", 4" depth concrete slab. Concrete should be prepped, formed and finished per City of Cheyenne and Board of Public Utilities Construction Specifications and Standard Drawings, 2014.
2. **SIGN PLACMENT:** Sign placement and mounting height shall be in accordance with the plans unless otherwise specified.
3. **POST EMBEDMENT:** Posts shall be directly embedded into the earth a minimum of four (4) feet and compacted.
4. **POST LENGTH:** Contractor shall be responsible for determining post length in conformance with the plans. Post length shall include embedment, clearance height and sign height.
5. **POST INSTALLATION:** Posts shall be set back from edge of pavement a minimum of three (3) feet.
7. **MOUNTING HEIGHT:** Mounting height shall be 4'6" from bottom of lowest portion of sign to top of greenway/sidewalk.



Know what's below.  
Call before you dig.

DRAWN BY: JV  
DATE: 01/05/2023

JOB TITLE: DESTINATION WAYFINDING SIGNAGE PLAN PHASE IV  
DRAWING NAME: SIGNAGE DETAILS

CITY OF CHEYENNE



DRAWING NO.  
WF-17  
SHEET 17 OF 17