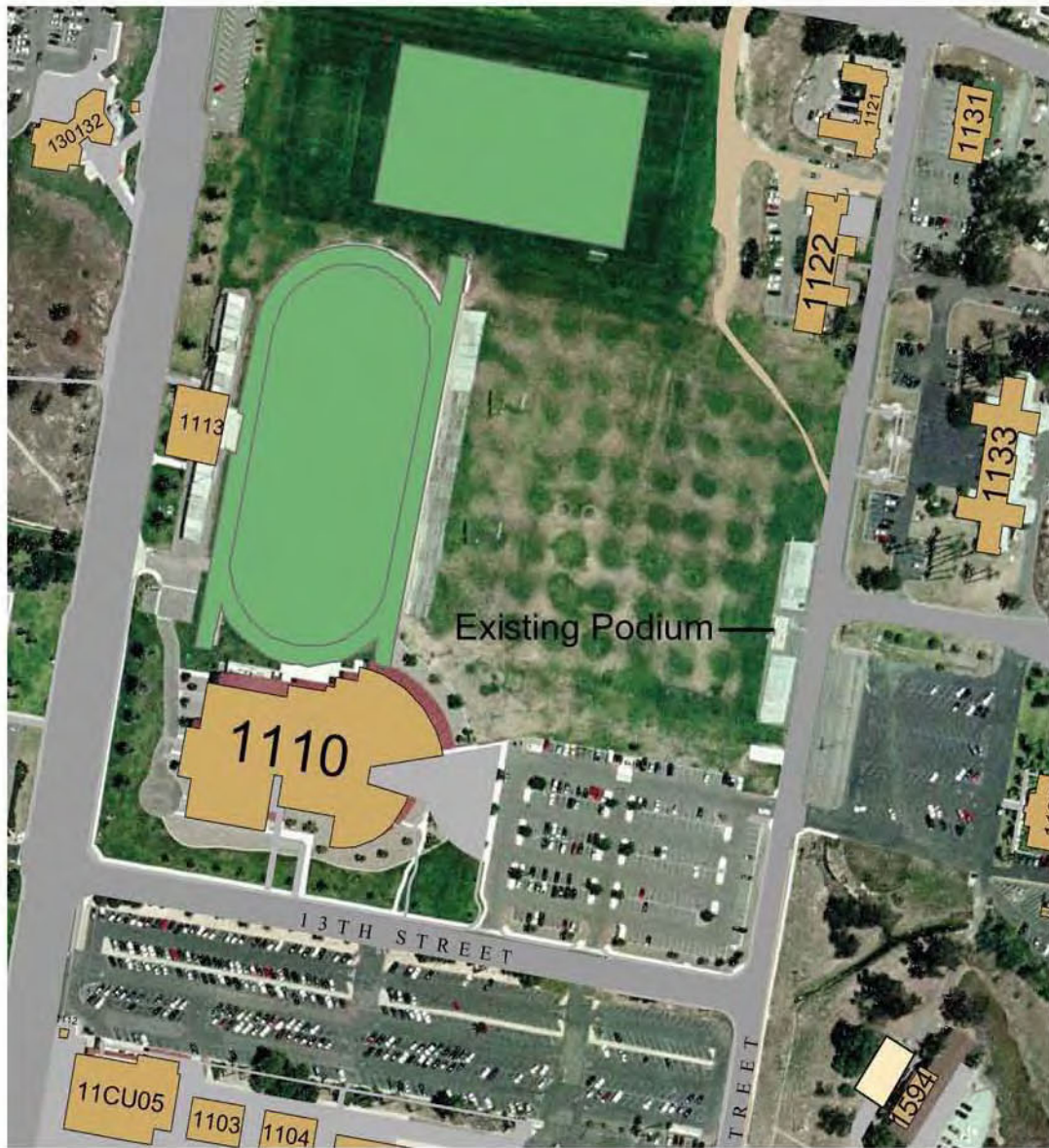


PARADE DECK - 11 AREA

Streetscape, Podium & Static Display Proposal



EXISTING CONDITIONS

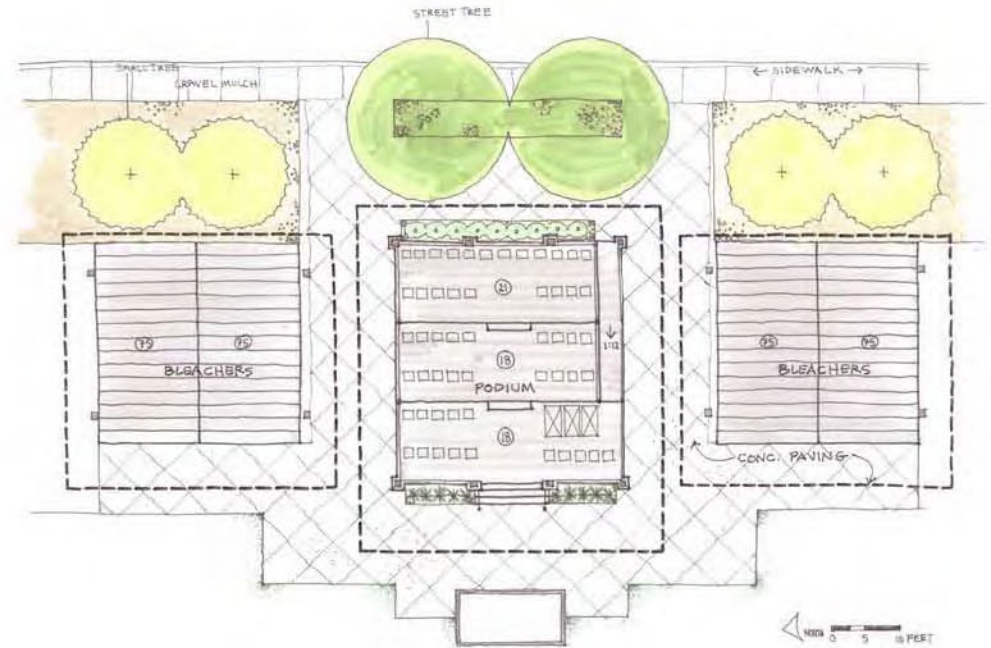
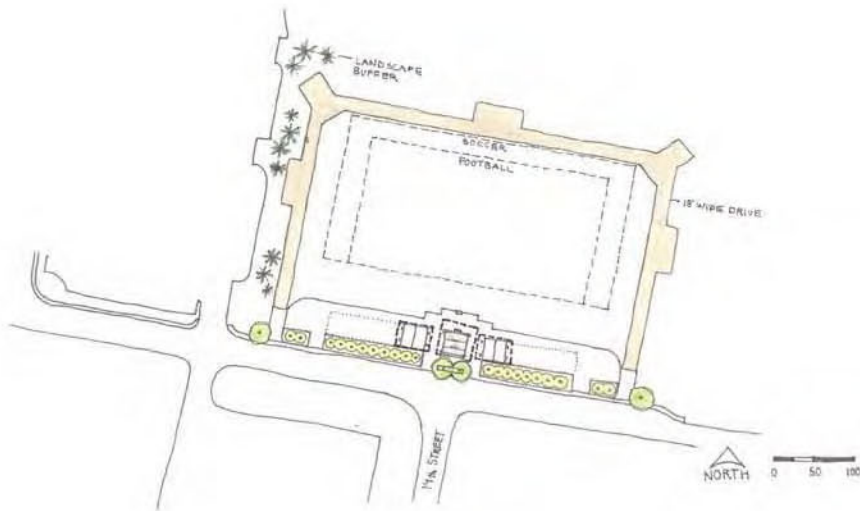
PROJECT GOAL:

Provide a parade deck and reviewing stand that is commensurate with, and respects Marine Corps pageantry. This includes:

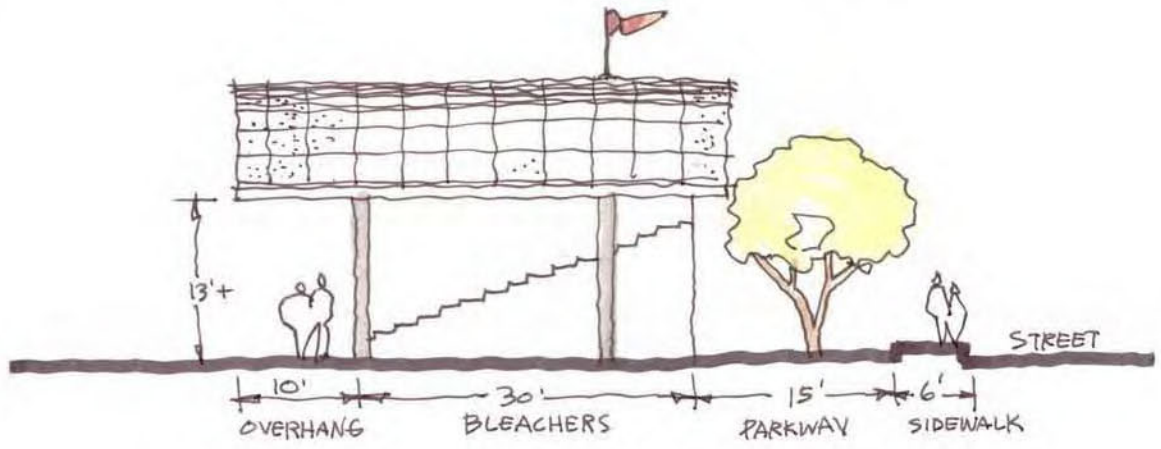
REVIEWING STAND

- A centered, shaded reviewing podium to accommodate 100 VIP guests, additional shaded bleachers that will accommodate 300 people, and space for additional bleachers for larger events.
- Enhanced streetscape and entry court provides a formal sense of entry and creates a formal destination.
- Entry plaza and memorial will become a Camp Pendleton center piece.

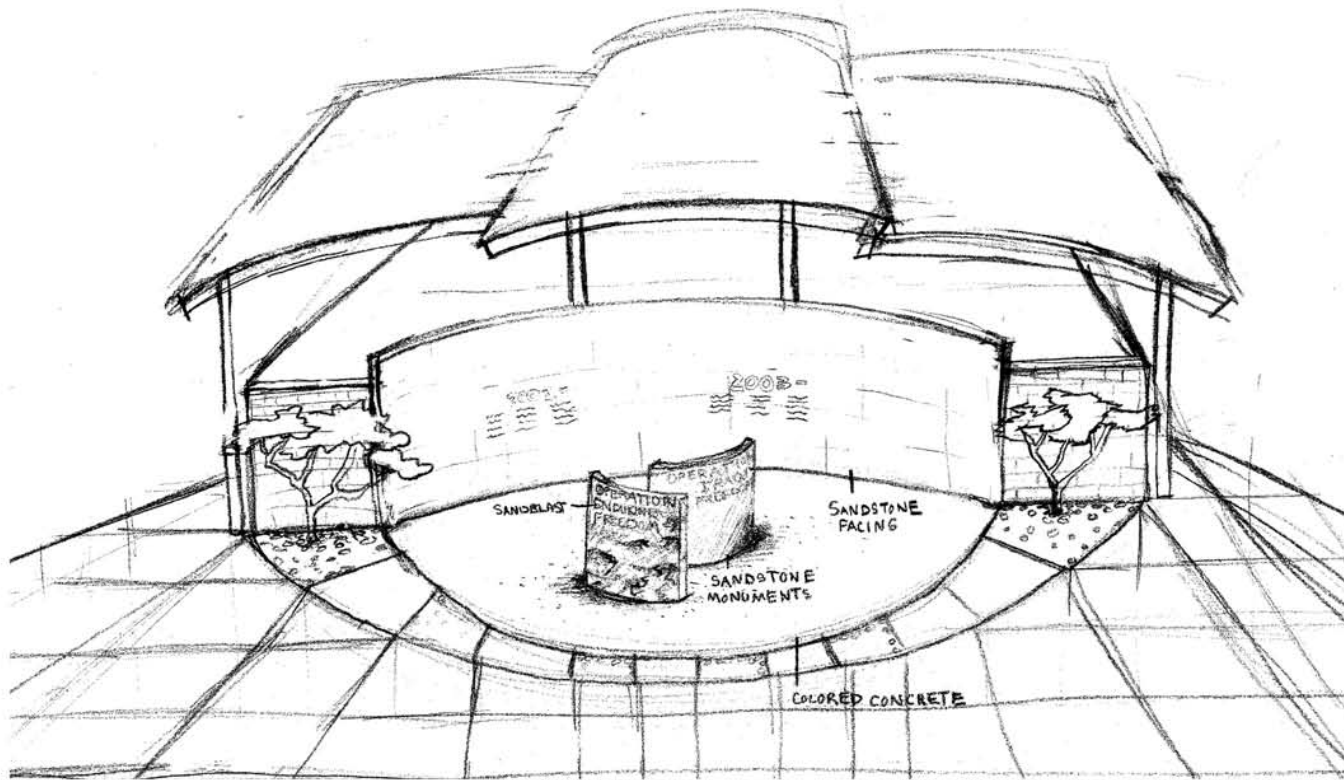
Concept includes: shade structures, entry plaza and memorial, full streetscape, and developed site landscaping and screening



PROPOSED PLAN



PROPOSED SHADE CANOPY



PROPOSED MEMORIAL