

21.12.2018

Trichy

To

**Dr.Zameer Pasha,  
The District Governor Designate  
Rotary District 3000**

**Sub: Mobile Blood Donation Van – International Grants Project**

Respected Sir,

Please find attached the proposal of Mobile Blood Donation Van Project through International Grants for the year 2019-2020 for your kind perusal.

It's our immense pleasure to submit the project proposal for Mobile Blood Donation Van. It is the need of the hour to provide safe and quality blood to innumerable patients, many of whose lives are lost for want of blood. Thank you for your kind initiative and constant motivation. Kindly let us know if any additional information is required.

Thanking you

Your's Sincerely,



**Rtn.Dr.S.Prabakaran**

**Rotary Club of Tiruchy Central** (Club Id: 61144), Rotary District 3000.

Director, **Uyir Thuli Blood Bank and Research Centre,**

D45/1&2-05, 8<sup>th</sup> cross West, Thillai Nagar, Trichy – 620018

Ph: 8437775678, 8939995678

Mail: [prabakaran@uyirthuli.co.in](mailto:prabakaran@uyirthuli.co.in)

## MOBILE BLOOD DONATION VAN PROJECT

<b>NAME OF THE PROJECT</b>	Require a customized VAN for collecting blood from voluntary donors from various premises including colleges, shopping malls, carnivals, meetings where there is a huge untapped potential blood donors.
<b>PROJECT OBJECTIVES</b>	<p>To collect blood from voluntary donors from various sites in and around Trichy and nearby districts where there is lot of untapped potential blood donors.</p> <p>To boost the immediate availability of all blood groups.</p> <p>To spread awareness about blood and blood donation to remote places. Reach poor and needy people and To conduct health camps free of cost at remote places.</p>
<b>BRIEF PROJECT SUMMARY</b>	<p>As is obvious the need for blood is increasing every day. The gap between need and supply is always widening. Motivated volunteers approaching blood bank is very minimal and a lot is required to be done to spread awareness. A mobile customized VAN will serve this purpose in many ways. In the city there are lot of places like colleges, shops, malls, carnivals and offices where potential donors who are yet to be tapped.</p> <p>Shortage of blood supply from voluntary non-remunerated blood donors leads to bleeding professional donors where there is a high risk of transfusion transmissible infections.</p> <p>Apart from blood donation camps, the van can be used for Blood grouping camps, Anemia detection camps, Health checkup camps at various places.</p>
<b>PROJECT BENEFICIARIES</b>	<p><b>GENERAL PUBLIC</b></p> <ul style="list-style-type: none"> <li>• It may be used to treat 22 different medical conditions</li> <li>• 1/4<sup>th</sup> of donated blood help treat people with cancer.</li> <li>• 10% of donated blood is used to treat pregnancy.</li> <li>• 30% of donated blood is used to treat anaemic patient.</li> <li>• 20% of donated blood is used to treat trauma and Road accidents.</li> <li>• 14% of donated blood is used to treat surgical patients.</li> </ul>



## MOBILE BLOOD DONATION VAN PROJECT

<b>AREA OF FOCUS</b>	DISEASE PREVENTION AND TREATMENT MATERNAL AND CHILD HEALTH BASIC EDUCATION AND LITERACY
<b>PROJECT LOCATION</b>	Rotary District 3000, under Trichy District by <b>UYIR THULI BLOOD BANK AND RESEARCH CENTRE</b>
<b>PROJECT SUSTAINABILITY</b>	It is a continuous project. Maintenance of vehicle and driver, staff and doctor salary are taken care of by the cooperating organization
<b>EXPECTED PROJECT IMPACT</b>	MOBILE BLOOD DONATION VAN will definitely go a long way in reducing the wide gap between the blood need and its supply thereby saving millions of lives.
<b>PROJECT LOCAL HOST CLUB</b>	Rotary Club of Tiruchy Central
<b>ROLE OF ROTARIANS</b>	Coordinating with various prospective agencies in conducting voluntary blood donation drive
<b>PROPOSED PROJECT IMPLEMENTATION DATE</b>	September 2019
<b>PROPOSED PROJECT COMPLETION DATE</b>	Continuous
<b>COOPERATING ORGANIZATION</b>	Uyir Thuli Blood Bank and Research Centre, D45/1&2-05, 8 <sup>th</sup> cross west, Thillai Nagar, Trichy – 620018. Tamil Nadu, India.
<b>IMPLEMENTATION PROJECT ORGANIZATION (IF ANY)</b>	NIL
<b>PROJECT BUDGET</b>	<b>\$42000</b>
<b>PROJECT COSTING BY THE DISTRICT</b>	
<b>RUNNING COST (IF ANY)</b>	Will be borne by the Co-operating Organization

CIN NO: U02423KA2004PTC033217

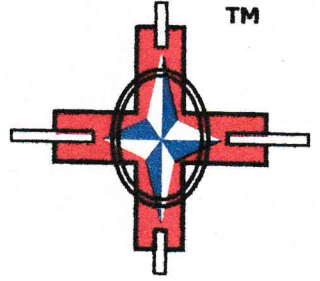
**SPAN HEALTHCARE PRIVATE LIMITED**

**Regd. Office:** Columbus Business Chambers, #17, 7th Temple Street, 15th Cross, Malleswaram, Bangalore - 560 003, Karnataka, INDIA.

Date: 20 September 2018

To,  
The Director  
Uyir Thuli Blood Bank  
Trichy

Dear Doctor,



Subject: Fabrication and supply of Mobile Blood Donation / Collection Van for your blood bank

In continuation to the discussions had with you regarding the subjected supply of MOBILE BLOOD DONATION VAN, we are submitting our best possible offer with entire details for your kind consideration, clarification and placing of needful orders accordingly

Looking forward to be associated with your esteemed blood bank always, we remain.

Thanks and regards.

**For Span Healthcare Private Limited**



**SHAKEEL AHAMED J.**  
No.9/21B, SCHOOL STREET  
KOYAMBEDU. CHENNAI 600 107  
TELEPHONE: +91 44 43800036  
MOBILE: 8428030002 / 9840760200  
EMAIL: [shakeel@spanhealth.com](mailto:shakeel@spanhealth.com)  
WEBSITE: [www.spanhealth.com](http://www.spanhealth.com)



## PRICING

No	Description	Price
1	MAHINDRA TOURISTER EXCELO VAN – 25 Seats Capacity, BS IV Compliant with standard factory fittings – (To be purchased and supplied by you)	Rs. 12,90,000
2	Re-modeling, fabrication, fittings, electrification – all inclusive (details below)	Rs. 4,00,000
3	Details on sophisticated fabrication including blood banking equipments & appliances to be fixed inside the van <ul style="list-style-type: none"><li>• Blood Donation Couches – 2 Nos. (or) Bed type fabrication – 3 Nos.</li><li>• Blood Collection Monitors – 3 Nos.</li><li>• Blood Tube Sealer (Table Top) – 1 No.</li><li>• Blood Bank Refrigerator – 125 Ltrs (80 Bags) – 1 No.</li><li>• High Definition large LED Television – 1 No.</li><li>• Audio System with necessary amplifier &amp; speakers 4 Nos.</li><li>• 125 Litres Domestic Refrigerator for Refreshment – 1 No.</li><li>• Portable Generator Set – 1 No.</li><li>• Canopy</li><li>• Water Cooler and Dispenser</li><li>• Miscellaneous expenses like curtains, blinds etc.</li></ul>	Rs. 10,00,000
	<b>Total cost of Van Fabrication, Accessories and Equipments (Rupees Twenty Six Lakhs Ninety Thousand only)</b>	<b>Rs. 26,90,000</b>

### Terms and Conditions :

1. We hereby declare that the particulars shown above are true and correct and the amount indicated are subjected to final negotiation and approval.
2. Our risk and responsibility will cease as soon as the goods are delivered at your premises.
3. Delivery Period: Within 90 days.
4. Payment Terms: 90% Advance along with PO & balance 10% on Delivery / Submission of Invoice.
5. Taxes and Duties : Prices quoted are exclusive of Goods & Service Tax (GST), to be charged extra
6. Price Quoted will be valid until 31.12.2018.
7. Warranty:
  - (a) VAN: Free services and maintenance as per the Manufacturer terms and conditions
  - (b) Blood Banking Equipments: 1 Year Standard Manufacturer warranty
  - (c) All other Equipments & Appliances: Standard Manufacturer warranty will imply.
  - (d) No warranty on the fixtures and accessories fitted on the VAN
8. All disputes are subject to our Corporate office in Bangalore Jurisdiction.

### GENERAL SPECIFICATIONS OF THE BLOOD DONATION VAN

#### EXTERIOR

- Factory fitted VAN vehicle, no major changes in front design and light fixtures
- Suitable additional electrical fittings on the exterior of the van complying with the Indian Road Safety Standards set by the RTO authority.
- Final appearance of the van will be painted / stickered to the taste and need of UYIR THULI BLOOD BANK with high quality non corrosive non peeling paint / stickers
- Suitable storage provisions with locked doors to accommodate Air Conditioner (Outdoor Unit), Generator etc. Good Quality CANOPY fitted to the entry side of the vehicle.
- Good quality Portable Generator

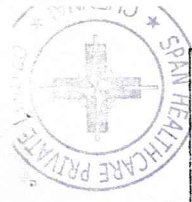


## **INTERIOR**

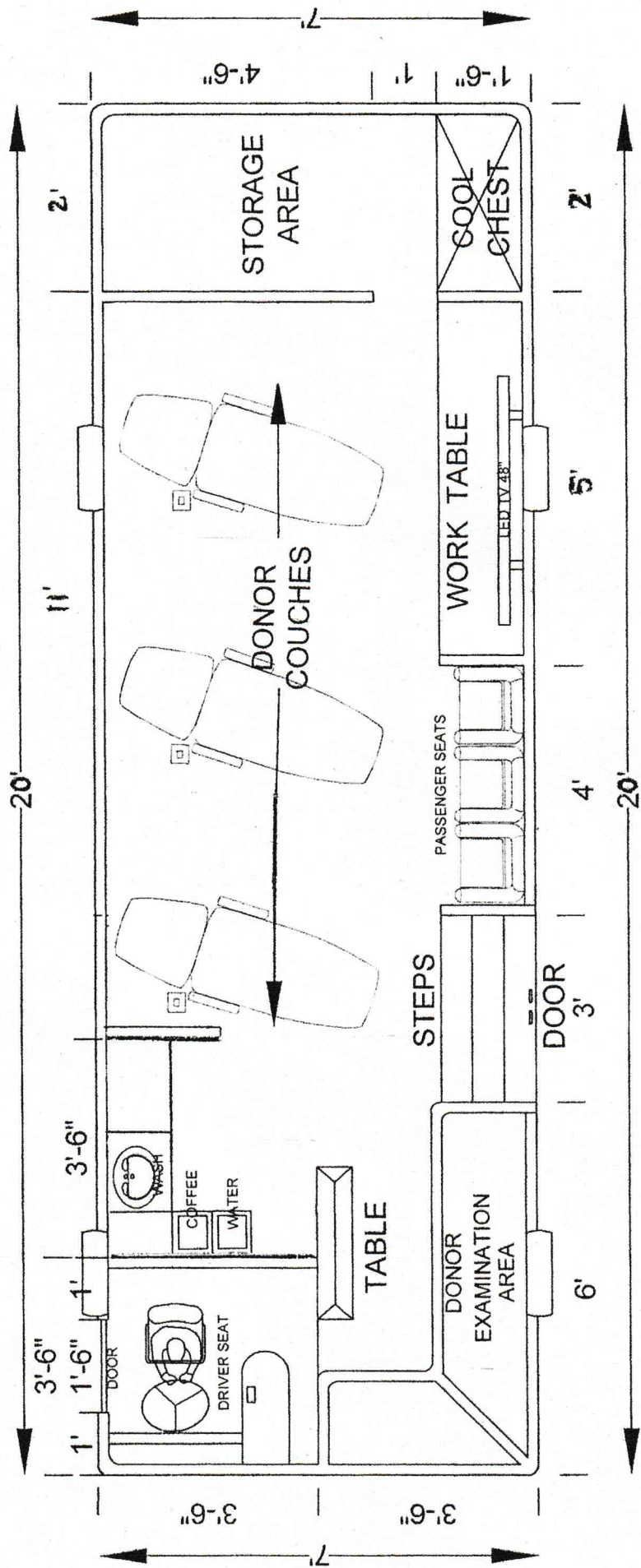
- Plush caravan type interiors with aesthetic roof which will not allow the cabin chillness to evaporate with high quality LED light fittings to provide ambient light and less heat and radiation for the safe working atmosphere for the staff and pleasant experience for the donors
- High quality Donor Couches (Designed for van use) with special provision and ample space provided to easily convert to vasovagal attack (shock) position
- Good quality Blood Collection Monitor cum Mixer on all the couches for good product collection by safe and better mixing of anticoagulant solution.
- Good quality Blood Tube Sealer – Table Top for sealing the collected blood bags
- High quality air conditioning system with sufficient capacity to keep the entire donor area chilled, which will operate on the running of the van engine itself and need not depend on the power source externally
- Good quality wooden floor with carpet for sound reduction and ample utilization in maintaining the cabin temperature cool enough
- Good quality curtains / blinds will be fitted on the side glass walls as per your needs
- High definition LED TV for entertainment to the blood donors during the donation process supported with ample high quality audio system and speakers to deliver the flawless sound inside the donor cabin
- Blood Bank Refrigerator (80 Bags) for transportation of collected products at either 4 or 22°C
- 125 Litres Domestic refrigerator for donor refreshment / disposables storage
- Good quality mini fans fitted at salient positions inside the cabin for use in case of A/C failure or insufficient cooling during extreme summer conditions
- Sufficient electrical plug sockets at vantage points for connecting the needy equipments required during the blood collection process
- Quality work table at salient points inside the cabin for use by the staff for blood collection process
- Storage cabins with easy sliding doors with locks below the work table for storage of blood donation material, disposables, records etc.
- Donor refreshment Sofa with a small table







# MOBILE BLOOD COLLECTION VAN



## PLAN





# SJB Automobiles Pvt Ltd., Mahindra

Rise

AUTHORISED DEALER FOR MAHINDRA TRUCK & BUSES LTD.

H.O : SF NO. 83/40 TRICHY TO MADURAI MAIN ROAD, ALUNTHUR VILLAGE, KUNNATHUR(PO),

SRIRANGAM TK, TRICHY (DT)-621 316. Cell : 98650-17175, 98421-74175,

B.O : NO-1, AMMAPETTAI, THARASURAM, THANJAVUR MAIN ROAD, KUMBAKONAM - 01. Cell : 98423-42175

B.O - KOVAI BYE PASS ROAD, RETTIPALAYAM, KVB ATM (OPP), AANDAN KOVIL (PO), KARUR-639002. Cell : 98422-49175

GSTIN : 33AAOCS6392Q1ZD

## PROFORMA INVOICE

To Name : M/S Uyir Thuli Boat Bank and Yezasath Centre, S. No. 5174  
 Address : 80A By: Sri KAU CHARITABLE Trust, Date: 28/9/2018  
 D45/1 & 2-05, 8th cross, Thulainagar, Trichy-18

S.No.	DESCRIPTION	QTY.	Rate		Amount	
			Rs.	Ps.	Rs.	Ps.
1.	Mahindra Excelo 25 seat BS IV	1.			15,40,000	
	INSURANCE					
	TEMP REGISTRATION					
	TCS 1%					
	LIFE TAX				2,50,000	
	Cost Discard					
			TOTAL		12,90,000	

Amount in Words : Twelve lacs ninety thousands only

Delivery Period

For SJB Automobiles Pvt Ltd.,

*P. Ravi*

E.&O.E.,

Sales Manager

### TERMS & CONDITIONS

- Insurance, Road Tax, Registration & Number Plate charges and Sales Tax as applicable will be extra.
- Prices are subject to change without any notice and that prevailing at the time of actual delivery will alone be applicable irrespective of the date of the order / payment.
- Delivery subject to availability of stock for delivery Ex-showroom.
- Vehicles will be delivery only after completion of the Registration formalities (as per M.V.Act)
- Amount paid will not carry any interest.
- 100 % payment to be made before delivery by crossed DD / Pay Order in favour of SJB Automobiles Pvt Ltd payable at Trichy.
- The warranty policy of MAHINDRA TRUCK & BUSES LTD. as applicable from time to time will apply.
- All transactions are subject to coimbatore jurisdiction only.



# ComfyCouch

for Aphaeresis and Blood Donation

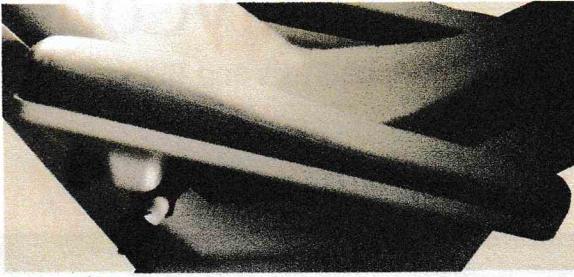


An elegant design focussed on quality, Safety and Hygiene, combined with maximizing comfort for the Donor and the Operator. The intelligent design significantly reduces the incidence of Vasovagal Attacks associated with Blood Donation

**QUALIMETD**  
*Assuring Quality*



## Superior Design

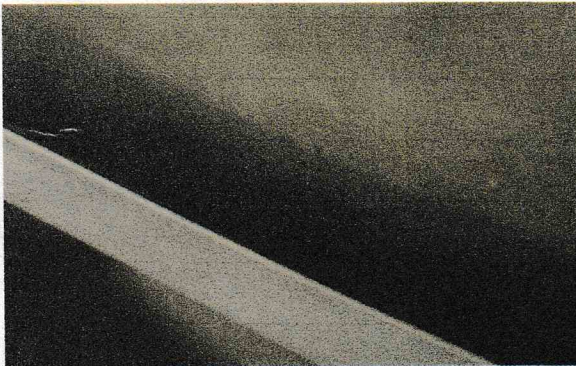


Quick conversion to " shock position " within 10 seconds of actuation. Single profile design ensures that the donor position remains unchanged during conversion to the " shock position " minimizing additional discomfort to the donor. The wedge shaped armrest aids a good venipuncture thereby facilitating optimal blood flow. The resting surfaces are designed with every type of donor in mind - even the tallest donors will be comfortable on the **Comfy Couch** and a swing - out armrest facilitates seating.



## Safety

Unique positioning of the feet ensures adequate blood supply to the head consistent with the hemodynamics of the body, thus minimizing the incidence of Vasovagal Attacks. The **ComfyCouch** remote control buttons are logically placed to avoid any confusion during operation that may involve the donor or the operator. Low Centre- of - gravity ensures that the **Comfy Couch** is very stable and does not tip over. The **Comfy Couch** has the provision for placing all devices and accessories required for the donation - this helps avoid RSI ( Repetitive Strain Injuries).



## Hygiene

Single profile design ensures that all surfaces are smooth and easy to clean. Smooth dust resistant construction of the remote. No sharp edges or dirt traps in the construction. Removable trays for all the accessories facilitates easy cleaning.

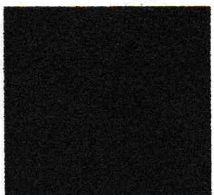
## Colour Options



Steel Grey1001



Beige1002



Navy Blue1003



Maroon 1004

## \*Technical Data

Seat width	520 mm
Profile length	1920 mm
Seat height	600 mm
Width of armrest	150 mm
Length of armrest	600 mm
BCM tray size	400 mm x 280 mm
Sphygmomano meter tray size	270 mm x 130 mm
Accessory tray size	370 mm x 160 mm
Wheel diameter	100 mm
Maximum load	150 kg



## Blood Storage Cabinets (Traditional Model)



Authentic®

### Features

- Constructed in double wall-PUF\ Insulated.
- Interior : Stainless Steel 22 G
- Exterior : GCRCA MS Sheet 1.2mm
- Full front opening door.
- Doubled walled typed with transparent full view
- Toughened double glass door.
- Glass Size : 558mm x 335mm x 6mm
- Door : fitted on the chamber by heavy-duty hinges
- Paint : Three coated DECO Paint, Non scratch able
- Locking arrangement.
- Gaskets on the door.
- Fitted with Castor lockable wheels for ease of mobility
- Full front opening door.

### Technical Specifications

Digital Temp. Controller	Microprocessor Based Digital Temperature Controller cum Indicator used for controlling 2° to 6°C +/-1°C, Accuracy : 0.1°C, Fan Fitted in the Inner side for proper air circulation in chamber
Air circulation Inspection Lamp	Having provision for Air Circulation through internal fan facility. One low watt bulb for internal inspection automatically / manual operated
Cooling Unit	Kirloskar / Copeland ISI Mark Compressor, which is CFC Free. Having stand by refrigerating system in case of regular system failing.
Safety	<ul style="list-style-type: none"> <li>• Electronic safety device.</li> <li>• Low &amp; High Voltage protector.</li> <li>• Audiovisual alarming case of power failure, opening the Door, &amp; in case of high &amp; Low internal temperature of BBR.</li> </ul>
Optional Accessories	<ul style="list-style-type: none"> <li>• Weekly Circular Chart Recorder For Continuous Temp. Recording Weekly Temperature Circular Chart Recorder (Range -10°C to + 10°C),</li> <li>• Accuracy:0.2°C, for Temp. Display visually &amp; for continuous temperature monitoring.</li> <li>• Voltage Stabilizer</li> </ul>

**SPAN HEALTHCARE PRIVATE LIMITED**

An ISO 9001:2015 Certified Company





<b>Model no.</b>	<b>BBR-60</b>	<b>BBR-200</b>	<b>BBR-400</b>
Catalogue No.	AIL-10102	AIL-10104	AIL-10106
Capacity	60 bags	200 bags	400 bags
Capacity in Liters	75L (approx.)	250L (approx.)	500L (approx.)
Temperature Setting	+4°C	+4°C	+4°C
Voltage	220 - 240 V, 50Hz	220 - 240 V, 50Hz	220 - 240 V, 50Hz
Starting/Running Current	3.5 A / 2 A	4.5 A / 3 A	8 A / 6 A
Ground Clearance	100 mm	100 mm	100 mm
Cool Down time (at fullload)	4 hours	5 hours	6 hours
Hold Over time (at full load)	3 hours	4 hours	4 hours
Temperature Gradient	±1°C	±1°C	±1°C



**SPAN HEALTHCARE PRIVATE LIMITED**

An ISO 9001:2015 Certified Company



Authentic®

## Blood Collection Monitors (Traditional Model)



### Technical Specification

- Pre selection of volume and auto care facility
- Display of volume and weight
- Display of set volume & pause function & total time taken
- Suitable for any bag either 350ml or 450ml
- Provision for pausing collection and change program during blood collection through microprocessor controller
- Automatic clamping through imported compact motor
- The Blood collection monitor having facility to convert weight into volume and vice versa
- The memory having the repeated collection of previous blood volume
- Uninterrupted Power Supply
- Power Supply 230 V  $\pm$  10; 50 Hz

### Key Features

- Volume can be set in 1 ml increment
- Provided smooth and gentle rocking action for uniform mixing of blood
- Blood collection time monitoring
- Low blood flow rate alarm in case blood flow is higher & lower than present volume
- Having automatic terminator facility of blood collection when blood volume collected reach present set volume
- Automatic zero volume calibration of blood bags
- Volume can be set from 1 ml to 450 ml or more

<b>Model No.</b>	<b>BCM</b>
Catalogue no.	AI10702
Collection Range	350ml + 450 ml
Voltage	230V, 50z
Calibration	Automatic

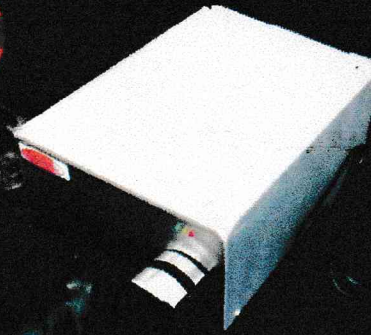
**SPAN HEALTHCARE PRIVATE LIMITED**

An ISO 9001:2015 Certified Company



Authentic®

## Blood Bank Tube Sealer (Traditional Model)



### Features

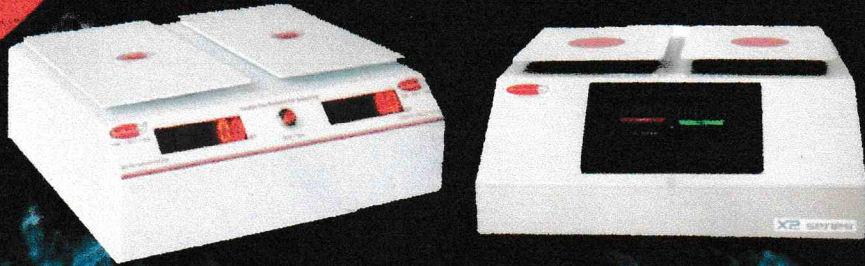
- Model: : BBTS-1
- Sealing time: 0.6 to 2 Second.
- Tube diameter: 2 to 8 mm with wall thickness of 0.75 mm.
- Dimension: 300 (L) x 175 (B) x 150 (H) in mm
- Construction: Made of Aluminum alloy casting with anti-corrosive chrome plating.
- Operating temperature: 0-40°C (32° to 104°F)
- Type of Sealing: RF. Di-electric
- Operation: Fully automated, continuous operation, it is suitable for bench top use.
- No warm up time.
- Power supply: 220-240 volts, 50 Hz, Single phase A.C. Supply. Power consumption: 30W.
- Quality of Seal: Wide 3 mm & hermetic seal on the tube for easy separation of two ends.
- Working: On radio frequency which is MOSFET based output: 70 W & operation frequency 40.68 MHz crystal controlled electrical safety-internal power supply.
- Security Provision: Shock Proof sealing handle device & plastic cover on the electrodes to avoid contact.
- Sensitivity: Sealer equipped with sophisticated sensing system.
- Maintenance: It is easy to clean the electrodes by removing the covering lid on the electrodes.
- Sealing: Sealer has an intelligent sensing system for better sealing.
- Weight: 5 Kg (approx).
- Battery backup: Cadmium free Ni-MH batteries rechargeable and maintenance free battery 12V DC.
- Capacity: 1100 to 1200 blood tube seals.
- Battery charging time : Less than 3 hours.
- Indicator: Battery power level indicator.
- Safety Standard: Equipment meet with electrical safety specification of IEC 60601-1.
- Quality Standard: ISO 9001:2008, ISO 13485:2003 certified

**SPAN HEALTHCARE PRIVATE LIMITED**

**An ISO 9001:2015 Certified Company**



**Double Pan Balance  
(Traditional + X2 series)**

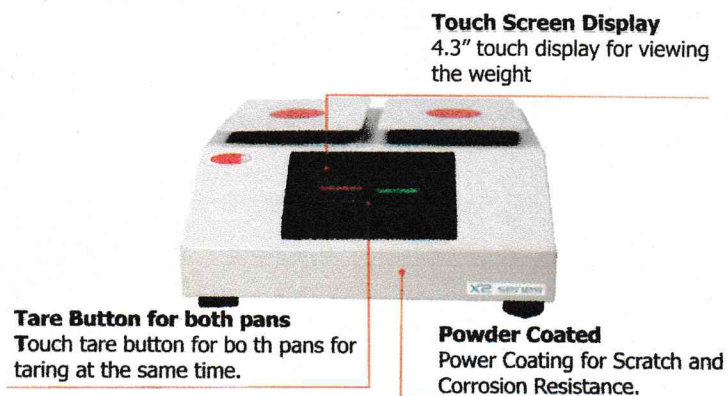


**Features of Double pan Weighing balance Tradiontional series**

- Capacity: 3000 gm
- 2 independent weight sensors & display weight differences range 0 to 3000 gm.
- Weight measurement range 0 to 3000 gm.
- Weight sensor.
- LED/ LCD Display with facility after equal balance and Pan wt. difference.
- Automatic "0" facility / Auto Calibration facility.
- Accessories like power adapter.
- Sensitivity: 0.1 gm
- Repeatability: 0.1 gm
- Wt. Calibration tolerance  $\pm 0.1$  gm.
- Total Accuracy of display  $\pm 0.1$  gm.
- Manufacturing unit compliant with ISO 13485:2003, ISO 9001 9001:2008.
- Equipment compliant with Electrical safety specification of IEC 60601-1.
- Power sources- 220-240 V, 50 Hz Single phase A.C. supply.

**Features of Double pan Weighing balance X2 series**

- Purpose : To balance the Component Separator Centrifuge's buckets to ensure machine imbalance doesn't occurs.
- Touch Screen Display to show the weight on both pans, the screen also shows how much weight you need to add to balance the pans, specially designed for balancing blood bags for centrifugal process. Accuracy is 0.1 gm for safer centrifugal process.
- Maximum Capacity of the balance is 3 kg for each pan.
- External Housing made from galvanized sheet (rust proof) of 18 SWG, with grey, anti-scratch powder coating.
- Length of power cable, approx. 2 m.

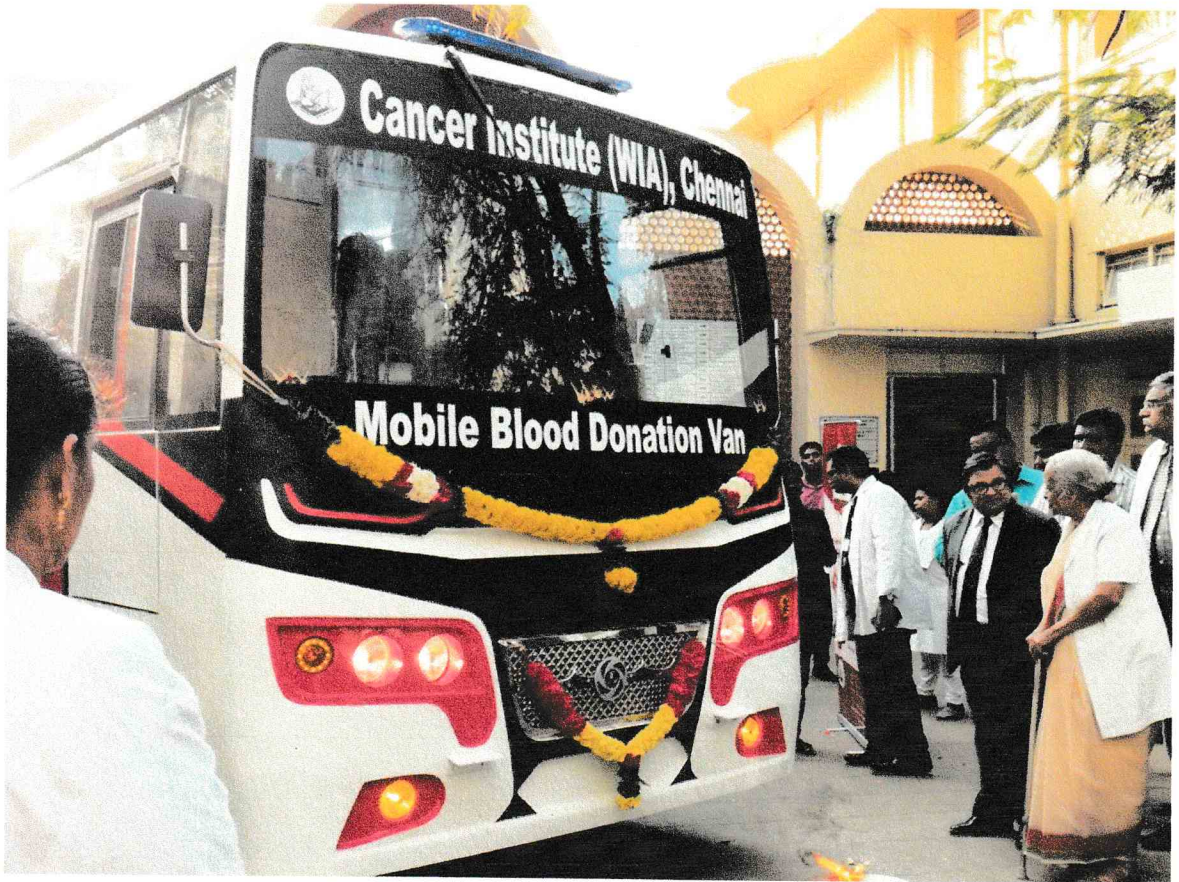


**SPAN HEALTHCARE PRIVATE LIMITED**

**An ISO 9001:2015 Certified Company**



**MOBILE BLOOD DONATION VAN PHOTOS**





**MOBILE BLOOD DONATION VAN PHOTOS**





**MOBILE BLOOD DONATION VAN PHOTOS**

