



Touch Kibera
Foundation

Profile



Touch Kibera
Foundation



INTRODUCTION



Touch Kibera Foundation (TKF) was formed with the specific purpose to protect orphans and abandoned children by providing a safe environment where they will be sheltered, nurtured and educated in ways that build competence, confidence and independence. TKF focuses on providing children and youth in Kibera with quality education, equal opportunities, and an environment to develop holistically. By providing the right combination of educational, extracurricular, and financial support to poor and orphaned children as well as youth, TKF aims to inspire dreams among those who otherwise do not stand a chance. Its current focus is restoration of peoples' hope through economic recovery, capacity building, and psychosocial support for the marginalized children especially orphans. These shall be through basic Educational training, practical skills in technical institutions, promotion of hygiene and sanitation in basic primary health care and sport promotion.

MISSION

The primary mission of Touch Kibera Foundation is providing the orphaned, destitute, outcast, unloved, needy, sick, handicapped persons, with a home, love, happiness, physical, mental, emotional and spiritual nourishment, the highest level of education possible, and a hope for a bright future.

VISION

The vision of The Touch Kibera Foundation Children's Centre Project is to one day have a self sustaining community consisting of a children's home, orphanage, school, training center, women's shelter, elderly person's home, hospital, library, technology center, shops, and other facilities that help a community to succeed. Our vision is to one day establish such communities all over the world

ORGANIZATIONAL VALUES

- Honesty
- Respect for individual
- Integrity
- Participation in communal activities
- Transparency in all transactions
- Accountability to all the actions/deeds performed by an individual
- Creativity



GUIDING PRINCIPLES



Touch Kibera Foundation follows the below mentioned guiding principles in implementation of its projects/programmes :

- Making efforts to achieve highest quality standards
- Promoting a culture of innovation and creativity
- Enhancing networking and coordination
- Facing challenges

PROFESSIONAL STRENGTH

- Highly qualified, experienced and devoted professionals and board members and staff;
- Adaptability to cope up and meet the requirements of diverse socio cultural environment ;
- Overwhelming support of local people.
- Acceptance as a representative of common people of the area.
- Extensive network to undertake initiatives at grassroots;
- Strong partnerships for undertaking innovative initiatives;

OUR NECESSARY GOALS AND KEY RESULTS ARE:

- To provide educational, psycho-social and nutritional support to vulnerable children/youths.
- To provide mentorship and guidance to children, youths (OVC) and care-givers in under developed areas.
- To provide information and assistance to youths on their reproductive health rights and sexuality education.
- Build a home that will raise, nurture and re-habilitate children, aged 2 and above.
- Recruit and train Employees who are knowledgeable and caring staff to guide the children down the right paths
- Source, Purchase and utilize the land in a way that it will become self-sustainable by growing our own crops, buy milking cows, install a rainwater tank and by creating a poultry farm
- To promote community health campaigns and awareness on STDs and STIs.
- To protect and defend the rights of each child against all forms of abuse.
- To empower upward mobile, innovative youths economically and socially through skill acquisition and digital education.
- To source for local and international volunteers that will support the work.
- To source for, obtain, collect and receive money and funds by way of contributions, aids, donations, subventions, legacies, grants, etc.



AREAS OF INTEREST OF TKF



1. Education and Mentoring activities – primary education, Secondary Education vocational education
2. Sporting Activities -Football,Tennis,Volleyball and Netball
3. HIV/AIDS
4. Economic Empowerment/Provision of Credit/Capacity Building
5. Youth& Adolescents
6. Entrepreneurship
7. Community Mobilization
8. Health and Sanitation

ACTIVITIES OF THE PROJECT

- 1) Training the youth on entrepreneurial skills.
- 2) Establishing recreation and business center.
- 3) Provision of credit services to the Youth in Kibera under a revolving fund program.
- 4) To run sport activities and Provision of sporting materials.
- 5) Forming youth's network of Savings and Credit Cooperative Societies (SACCOs)
- 6) Civic education and leadership training
- 7) Computer training and to have a literacy school for adult learners
- 8) To run professional trainings (tailoring, hairdresser, crafts, informatics, cinema shooting and production)
- 9) To promote community development through support to local community initiatives to improve the standards of living of the population.
- 10) To build a youth sport center and to create a library
- 11) To improve the capacity of the staff of local NGOs and CBOs
- 12) To run vocational skills training (metal fabrication, ICT, carpentry, tailoring, saloon).
- 13) To empower local communities to search for and identify ways of addressing their developmental needs through educating and supporting young people to become effective agents of change.
- 14) To promote gender equality through equally participation in all development activities.
- 15) To support HIV/AIDS orphans affected families.

PROJECT SUSTAINABILITY

For sustainability of this project after the donor withdrawal, the program has been designed in such a way that the home will generate some income from the farming, cattle rearing for the production of milk and meat and through foreign and local fundraising. Other agricultural activities are planned to support the feeding programme. A comprehensive funding strategy has also been put in place to ensure continuity of the project initiatives at all times.

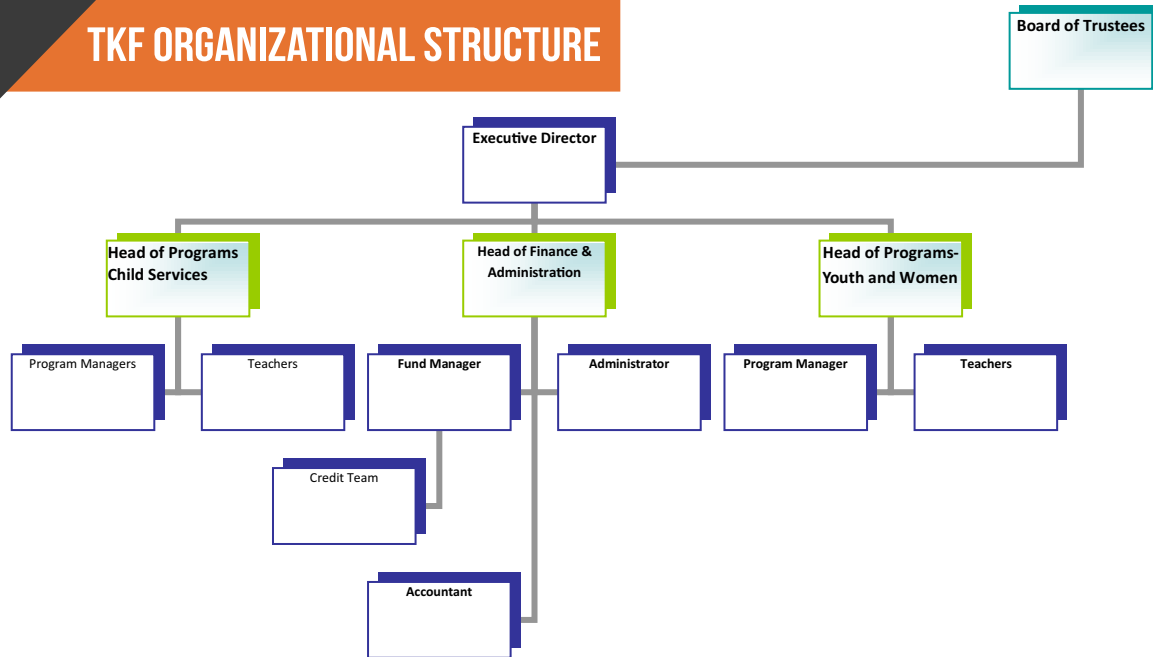


TOUCHING LIVES ONE AT TIME



The project team works closely with the beneficiaries, who are the children, local administration, and the schools where these children will go, and their guardians, and schools within and around Kibera. There shall be mid-term evaluation and end of project evaluation. The project stakeholders will be involved in developing the evaluation tools. However, TKF's Homework will be monitored on daily basis thus the benefits will be known

TKF ORGANIZATIONAL STRUCTURE



CHALLENGES FACED BY TKF

The problem of OVC children is acute due to urbanization and industrialization. These orphan children are left without care and support. These children are involved in rag picking; pick pocketing & participating in anti social, criminal activities. TKF like other established institutions faces several challenges, among the challenges being:

- Limited funds i.e. The centre has been receiving many children overtime and the funding has increasingly become a challenge, we hereby request kindly for Donors to help us mitigate these underlying challenges.
- Lack of modern technology i.e equipment TKF lacks computers that can be useful in keeping track of the children records, basic accounting, Networking etc.
- School Fees; due to a growing population of the orphaned children joining the center, paying school fees has been a big challenge. We call upon well-wishers to help identify their area of help to aid the less fortunate obtain basic education.
- Health and Diseases -In cases of disease infection, sporadic outbreaks, care and tendering becomes a major challenge settling the hospital bills, quick response to disease attacks. We request kindly the stakeholders, Aid Agencies and well-wishers to aid in healthcare provision, creation of a TKF health dispensary to help in emergence of such health challenges.
- Food, Shelter, clothing; Electricity and water bills sometimes rise to a high scale and we face a threat of disconnection this is sometimes brought about by high population of children leading to increased energy needs, and or erroneous calculations, limited funds, Lack of income generating

activities by the center, food, shelter and clothing poses a bigger challenge to the ever growing children population.

SOURCING OF FUNDS

Touch Kibera Foundation is looking for separate entities to sponsor and fund the proposed budget above. Each Budget Item will be dedicated to the sponsor who will be allowed to choose its name and will be responsible for the building and monthly costs of the project. They can choose to be as involved in the project as they wish.

We are looking to gain sponsorship and support from international donor agencies and charities for the costs of building and maintaining the community centre. We will run fundraising events in Australia, Canada and America and will also have monthly supporters helping to fund our monthly maintenance costs.

Funds will be generated locally via several small projects on the land i.e the poultry farm. Crops will be grown to cut down on costs and to become as self reliant and sustainable as possible.

FUNDING PARTNERS

- Select Banks
- Social Good USA
- GoFundMe pages
- Rotary International USA
- Individuals
- Corporate Sponsorships under CSR Budgets

BANK DETAILS

BANK DETAILS

Bank - Equity Bank
Account Name: Touch Kibera Foundation
Account No. **1170171969978**
Bank Branch - Kibra Branch

Swift Code: Eqblkena
Branch: 068
Branch Code: 117

Mpesa Paybill Details
Paybill Number 247 247
Account Number **1170171969978**

CONTACT US



Touch Kibera Foundation
Kibera Drive Nairobi
P.O Box 22035-00523
touchkiberafoundation@gmail.com
www.touchkiberafoundation.org
0723633602 0776399009
facebook/touchkiberafoundation