

# 育



そだ



Pronounced "so-da"

# GROW

History of the Kanji



**Birch, spruce and cottonwood trees all grow in Sand Lake Park.**

Look around - which type of tree grows more often? Can you find an area where one type of tree grows more abundantly?

十  
女  
子  
育



# 育

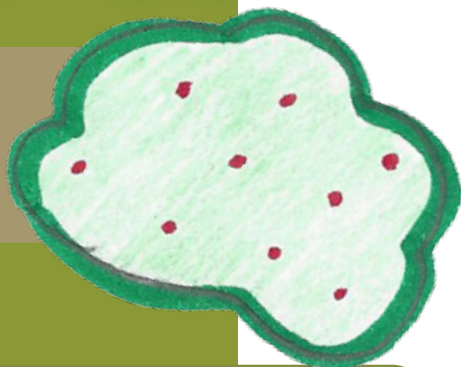
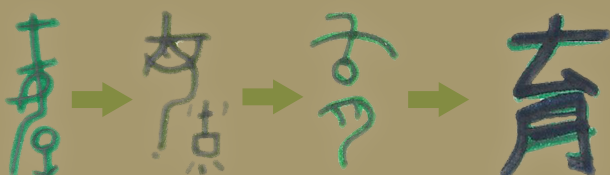


そだ



Pronounced "so-da"

# GROW



History of the Kanji

**Birch, spruce and  
cottonwood trees  
all grow in  
Sand Lake Park.**



Look around - which type of tree grows more often? Can you find an area where one type of tree grows more abundently?

木



キ

Pronounced "ki"

TREE



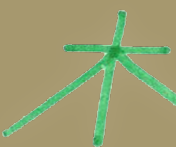
### Did you know?

Stripping bark from Birch trees kills the tree. Never strip bark off of trees.

The spruce our here in the park are Sitka Spruce trees.

Some Cottonwood trees can grow up to 100 ft. tall.

History of the Kanji



木

キ

Pronounced "ki"

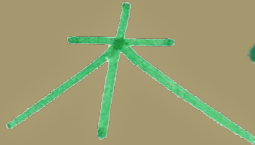
TREE



Cottonwood



Spruce



History of the Kanji

## Did you know?

Stripping bark from Birch trees kills the tree. Never strip bark off of trees.

The spruce our here in the park are Sitka Spruce trees.

Some Cottonwood trees can grow up to 100 ft. tall.



Birch